

Report No.: 178167624a 001 Page 1 of 77

Client: QINGDAO HAILI COMMERCIAL APPLIANCES CO., LTD.

Contact Information: The South of Gongren Rd. Liquanzhuang Town Laixi City Shandong
P.R. China

Test item(s): 601 materials

Identification/ Ice-cream showcase

Model No(s): Tested Model No.:ML18

Additional Model No.: Please find in page 2

Sample obtaining method: Sending by customer

Condition at delivery: Test item complete and undamaged.

Sample Receiving date: 2022-06-13;2022-06-23;2022-07-25

Testing Period: 2022-06-13 to 2022-07-07;2022-07-26 to 2022-07-29

Place of testing: Chemical laboratory Qingdao

Test Specification:

Test result:

Customer's requirement:

1. Cadmium, Lead, Chromium (VI), Mercury, Polybrominated biphenyls (PBB) and Polybrominated diphenyl ethers (PBDE), RoHS Phthalates (BBP, DBP, DEHP, DIBP)
According to RoHS(recast): Restriction of the Use of Certain Hazardous Substances in Electrical and Electronic Equipment, 2011/65/EU Annex II and its amendment

PASS

For and on behalf of
TÜV Rheinland/CCIC (Qingdao) Co., Ltd.



2022-08-09

Nina Yang / Senior Project Engineer

Date

Name/Position

Sample information is provided by customer. Test result is drawn according to the kind and extent of tests performed.

This test report relates to the above mentioned test sample. Without permission of the test center this test report is not permitted to be duplicated in extracts. This test report does not entitle to carry any safety mark on this or similar products.

"Decision Rule" document announced in our website (<https://www.tuv.com/landingpage/en/qm-gcn/>) describes the statement of conformity and its rule of enforcement for test results are applicable throughout this test report.

The client declared that below additional models consist of tested different components and part components of tested model ML18.

ML8xx, ML12xx, ML16xx, ML18 xx, ETHA1711W, ETHA1711S

TM8xx, TM12xx, TM16xx, TM18xx, ETHA1710W, ETHA1710S

KS8xx, KS12xx, KS16xx, KS18xx, DN12, DN16, DN18

PT10xx, PT12xx, RT10xx, RT12xx, BH10, BH12

EML-FG10, EML-CG10, EML-FG12, SPEWEHA12, EML-CG12, SPEWRHA12, EML-PT10, EML-RT10,
EML-PT12, EML-RT12

DE6xx, DE8xx, DE9xx

KL6xx, KL8xx, KL9xx, KL10xx, KL12xx

GLS6xx, GLS8xx, GLS9xx

BL004, BL006, SPEWHA3

DLV-004, DLV-006, SPEWF6

SMART-03xx, TEVHA67W, TEVHA67S, TEVHA3W, TEVHA3S, SMART-02xx, TEVHA2W, TEVHA2S

BF5, SFHA3, BF7, BF10, BF15, RF50A, RF70A, RF100A, RF150A

SD-50A, METKHA449S, SD-50B, METKHA448S

Note: Where "xx" can be any letter or number or none, No difference between products, other than color or door opening direction or height.

Test Report No.: 178167624a 001

Page 3 of 77

Material List:

Item: Ice-cream showcase
 Tested Model No.:ML18
 Additional Model No.: Please find in page 2

| Material No. | Material | Color | Location |
|--------------|--------------------|------------|----------------|
| M001 | Coating | white | Refer to photo |
| M002 | Coating | black | Refer to photo |
| M003 | Metal | silver | Refer to photo |
| M004 | Plastic | yellow | Refer to photo |
| M005 | Plastic + adhesive | red/grey | Refer to photo |
| M006 | Metal | silver | Refer to photo |
| M007 | Paper + adhesive | beige | Refer to photo |
| M008 | Plastic + adhesive | black | Refer to photo |
| M009 | Plastic | beige | Refer to photo |
| M010 | Plastic | white | Refer to photo |
| M011 | Plastic | white | Refer to photo |
| M012 | Tape | yellow | Refer to photo |
| M013 | Paper | brown | Refer to photo |
| M014 | Plastic | black | Refer to photo |
| M015 | Plastic | black | Refer to photo |
| M016 | Plastic + adhesive | black | Refer to photo |
| M017 | Plastic | beige | Refer to photo |
| M018 | Metal | silver | Refer to photo |
| M019 | Plastic | blue | Refer to photo |
| M020 | Metal | silver | Refer to photo |
| M021 | Plastic | red | Refer to photo |
| M022 | Plastic | white | Refer to photo |
| M023 | Metal | silver | Refer to photo |
| M024 | Plastic +Printing | black/grey | Refer to photo |
| M025 | Plastic | black | Refer to photo |
| M026 | Metal | silver | Refer to photo |
| M027 | Plastic | black | Refer to photo |

Test Report No.: 178167624a 001

Page 4 of 77

| Material No. | Material | Color | Location |
|--------------|-----------------------|--------------|----------------|
| M028 | Plastic | transparent | Refer to photo |
| M029 | Plastic | red | Refer to photo |
| M030 | Plastic | green | Refer to photo |
| M031 | Plastic | white | Refer to photo |
| M032 | Metal | silver | Refer to photo |
| M033 | Metal | silver | Refer to photo |
| M034 | Metal | silver | Refer to photo |
| M035 | Glass | green | Refer to photo |
| M036 | Glass | transparent | Refer to photo |
| M037 | Electronic components | multi-color | Refer to photo |
| M038 | Plastic | grey | Refer to photo |
| M039 | Metal | golden | Refer to photo |
| M040 | Metal | silver | Refer to photo |
| M041 | Metal | silver | Refer to photo |
| M042 | Metal | silver | Refer to photo |
| M043 | Metal | golden | Refer to photo |
| M044 | Plastic | grey | Refer to photo |
| M045 | Plastic | black | Refer to photo |
| M046 | Plastic | black | Refer to photo |
| M047 | Plastic | blue | Refer to photo |
| M048 | Plastic | yellow/green | Refer to photo |
| M049 | Plastic | black | Refer to photo |
| M050 | Metal | silver | Refer to photo |
| M051 | Plastic | orange | Refer to photo |
| M052 | Plastic | black | Refer to photo |
| M053 | Plastic | black | Refer to photo |
| M054 | Plastic | orange | Refer to photo |
| M055 | Plastic | black | Refer to photo |
| M056 | Plastic + coating | white/black | Refer to photo |
| M057 | Plastic | Translucent | Refer to photo |
| M058 | Plastic | white | Refer to photo |

Test Report No.: 178167624a 001

Page 5 of 77

| Material No. | Material | Color | Location |
|--------------|-----------------------|-------------|----------------|
| M059 | Plastic | white | Refer to photo |
| M060 | Metal | silver | Refer to photo |
| M061 | Plastic | black | Refer to photo |
| M062 | Electronic components | white/black | Refer to photo |
| M063 | PCB board | green | Refer to photo |
| M064 | PCB board | green | Refer to photo |
| M065 | Electronic components | black | Refer to photo |
| M066 | Electronic components | black/white | Refer to photo |
| M067 | Solder | solder | Refer to photo |
| M068 | Electronic components | orange | Refer to photo |
| M069 | Plastic + adhesive | white | Refer to photo |
| M070 | Plastic | black | Refer to photo |
| M071 | Metal | silver | Refer to photo |
| M072 | Plastic | grey | Refer to photo |
| M073 | Plastic | red | Refer to photo |
| M074 | Plastic | green | Refer to photo |
| M075 | Plastic | grey | Refer to photo |
| M076 | Plastic | yellow | Refer to photo |
| M077 | Plastic + adhesive | red | Refer to photo |
| M078 | PCB board | black | Refer to photo |
| M079 | Electronic components | black | Refer to photo |
| M080 | Electronic components | black | Refer to photo |
| M081 | Solder | silver | Refer to photo |
| M082 | Plastic | black | Refer to photo |
| M083 | Plastic | white | Refer to photo |
| M084 | Plastic | Translucent | Refer to photo |
| M085 | Plastic + adhesive | black | Refer to photo |
| M086 | Metal | silver | Refer to photo |
| M087 | Plastic | Translucent | Refer to photo |
| M088 | Plastic | white | Refer to photo |

Test Report No.: 178167624a 001

Page 6 of 77

| Material No. | Material | Color | Location |
|--------------|-----------------------|-------------|----------------|
| M089 | Plastic | black | Refer to photo |
| M090 | Plastic | black | Refer to photo |
| M091 | Plastic | black | Refer to photo |
| M092 | PCB board | green | Refer to photo |
| M093 | Solder | silver | Refer to photo |
| M094 | Metal | coppery | Refer to photo |
| M095 | Plastic | yellow | Refer to photo |
| M096 | Plastic | black | Refer to photo |
| M097 | Plastic | red | Refer to photo |
| M098 | Plastic | green | Refer to photo |
| M099 | Plastic | black | Refer to photo |
| M100 | Plastic | black | Refer to photo |
| M101 | Paper + adhesive | white/black | Refer to photo |
| M102 | PCB board | green | Refer to photo |
| M103 | Plastic | red | Refer to photo |
| M104 | Plastic | light black | Refer to photo |
| M105 | Metal | silver | Refer to photo |
| M106 | Electronic components | black | Refer to photo |
| M107 | Solder | silver | Refer to photo |
| M108 | Plastic | white | Refer to photo |
| M109 | Plastic | red | Refer to photo |
| M110 | Plastic | red | Refer to photo |
| M111 | Plastic | grey | Refer to photo |
| M112 | Plastic | green | Refer to photo |
| M113 | Plastic | white | Refer to photo |
| M114 | Plastic | grey | Refer to photo |
| M115 | Plastic | red | Refer to photo |
| M116 | PCB board | green | Refer to photo |
| M117 | Solder | silver | Refer to photo |

Test Report No.: 178167624a 001

Page 7 of 77

| Material No. | Material | Color | Location |
|--------------|------------------------------|------------|----------------|
| M118 | Plastic | black | Refer to photo |
| M119 | Plastic | black | Refer to photo |
| M120 | Plastic | green | Refer to photo |
| M121 | Plastic | yellow | Refer to photo |
| M122 | Plastic | red | Refer to photo |
| M123 | Plastic | orange | Refer to photo |
| M124 | Metal | silver | Refer to photo |
| M125 | Metal | silver | Refer to photo |
| M126 | Plastic + coating + adhesive | green/blue | Refer to photo |
| M127 | Plastic | white | Refer to photo |
| M128 | Metal + coating | black | Refer to photo |
| M129 | Plastic | white | Refer to photo |
| M130 | Metal | coppery | Refer to photo |
| M131 | Metal + coating | black | Refer to photo |
| M132 | Plastic | black | Refer to photo |
| M133 | Plastic | black | Refer to photo |
| M134 | Plastic | black | Refer to photo |
| M135 | Plastic | yellow | Refer to photo |
| M136 | Metal | silver | Refer to photo |
| M137 | Plastic | black | Refer to photo |
| M138 | Electronic components | red | Refer to photo |
| M139 | Electronic components | blue | Refer to photo |
| M140 | Ceramic | black | Refer to photo |
| M141 | Metal | coppery | Refer to photo |
| M142 | Electronic components | black | Refer to photo |
| M143 | Electronic components | black | Refer to photo |
| M144 | Plastic | black | Refer to photo |
| M145 | PCB board | green | Refer to photo |
| M146 | Solder | silver | Refer to photo |
| M147 | Plastic | grey | Refer to photo |
| M148 | Plastic | black | Refer to photo |

Test Report No.: 178167624a 001

Page 8 of 77

| Material No. | Material | Color | Location |
|--------------|----------|--------------|----------------|
| M149 | Plastic | white | Refer to photo |
| M150 | Plastic | brown | Refer to photo |
| M151 | Plastic | blue | Refer to photo |
| M152 | Plastic | brown | Refer to photo |
| M153 | Plastic | yellow/green | Refer to photo |
| M154 | Plastic | black | Refer to photo |
| M155 | Plastic | white | Refer to photo |
| M156 | Plastic | black | Refer to photo |
| M157 | Plastic | white | Refer to photo |
| M158 | Metal | silver | Refer to photo |
| M159 | Metal | silver | Refer to photo |
| M160 | Plastic | black | Refer to photo |
| M161 | Plastic | yellow/green | Refer to photo |
| M162 | Plastic | brown | Refer to photo |
| M163 | Plastic | blue | Refer to photo |
| M164 | Metal | silver | Refer to photo |
| M165 | Metal | silver | Refer to photo |
| M166 | Metal | silver | Refer to photo |
| M167 | Metal | silver | Refer to photo |
| M168 | Metal | silver | Refer to photo |
| M169 | Plastic | white | Refer to photo |
| M170 | Metal | silver | Refer to photo |
| M171 | Plastic | black | Refer to photo |
| M172 | Plastic | black | Refer to photo |
| M173 | Metal | grey | Refer to photo |
| M174 | Plastic | white | Refer to photo |
| M175 | Plastic | cream | Refer to photo |
| M176 | Plastic | blue | Refer to photo |
| M177 | Plastic | brown | Refer to photo |
| M178 | Plastic | yellow/green | Refer to photo |

Test Report No.: 178167624a 001

Page 9 of 77

| Material No. | Material | Color | Location |
|--------------|-----------------------|-------------|----------------|
| M179 | Plastic | black | Refer to photo |
| M180 | Plastic | yellow | Refer to photo |
| M181 | Plastic | white | Refer to photo |
| M182 | Metal | silver | Refer to photo |
| M183 | Electronic components | yellow | Refer to photo |
| M184 | Metal + coating | white/black | Refer to photo |
| M185 | Solder | silver | Refer to photo |
| M186 | Glue | transparent | Refer to photo |
| M187 | Plastic | white | Refer to photo |
| M188 | Plastic | white | Refer to photo |
| M189 | Plastic | black | Refer to photo |
| M190 | Plastic | red | Refer to photo |
| M191 | Plastic | transparent | Refer to photo |
| M192 | Plastic | transparent | Refer to photo |
| M193 | Plastic | black | Refer to photo |
| M194 | Plastic | blue | Refer to photo |
| M195 | Metal | gold | Refer to photo |
| M196 | Plastic | brown | Refer to photo |
| M197 | Glass | transparent | Refer to photo |
| M198 | Metal | silver | Refer to photo |
| M199 | Metal | silver | Refer to photo |
| M200 | Metal | silver | Refer to photo |
| M201 | Metal | silver | Refer to photo |
| M202 | Metal | silver | Refer to photo |
| M203 | Metal | silver | Refer to photo |
| M204 | Metal | brass | Refer to photo |
| M205 | Metal | silver | Refer to photo |
| M206 | Metal | silver | Refer to photo |
| M207 | Metal | brass | Refer to photo |
| M208 | Metal | brass | Refer to photo |

Test Report No.: 178167624a 001

Page 10 of 77

| Material No. | Material | Color | Location |
|--------------|----------|-----------|----------------|
| M209 | Metal | gold | Refer to photo |
| M210 | Metal | silver | Refer to photo |
| M211 | Metal | silver | Refer to photo |
| M212 | Metal | silver | Refer to photo |
| M213 | Metal | silver | Refer to photo |
| M214 | Metal | silver | Refer to photo |
| M215 | Metal | silver | Refer to photo |
| M216 | Metal | silver | Refer to photo |
| M217 | Coating | black | Refer to photo |
| M218 | Metal | silver | Refer to photo |
| M219 | Plastic | black | Refer to photo |
| M220 | Coating | black | Refer to photo |
| M221 | Metal | silver | Refer to photo |
| M222 | Metal | silver | Refer to photo |
| M223 | Plastic | black | Refer to photo |
| M224 | Metal | silver | Refer to photo |
| M225 | Metal | silver | Refer to photo |
| M226 | Plastic | black | Refer to photo |
| M227 | Metal | gold | Refer to photo |
| M228 | Coating | black | Refer to photo |
| M229 | Metal | silver | Refer to photo |
| M230 | Coating | grey | Refer to photo |
| M231 | Coating | dark grey | Refer to photo |
| M232 | Coating | black | Refer to photo |
| M233 | Metal | silver | Refer to photo |
| M234 | Metal | silver | Refer to photo |
| M235 | Metal | silver | Refer to photo |
| M236 | Coating | white | Refer to photo |
| M237 | Metal | silver | Refer to photo |
| M238 | Metal | silver | Refer to photo |

Test Report No.: 178167624a 001

Page 11 of 77

| Material No. | Material | Color | Location |
|--------------|----------------------------------|-------------|----------------|
| M239 | Metal | silver | Refer to photo |
| M240 | Coating | black | Refer to photo |
| M241 | Metal | silver | Refer to photo |
| M242 | Metal | silver | Refer to photo |
| M243 | Plastic | black | Refer to photo |
| M244 | Plastic | white | Refer to photo |
| M245 | Metal | silver | Refer to photo |
| M246 | Metal | silver | Refer to photo |
| M247 | Plastic | black | Refer to photo |
| M248 | Plastic | white | Refer to photo |
| M249 | Plastic | black | Refer to photo |
| M250 | Plastic | black | Refer to photo |
| M251 | Plastic | black | Refer to photo |
| M252 | Plastic | black | Refer to photo |
| M253 | Plastic | black | Refer to photo |
| M254 | Plastic | blue | Refer to photo |
| M255 | Plastic | grey | Refer to photo |
| M256 | Plastic | transparent | Refer to photo |
| M257 | Plastic + Printing + Adhesive | multi-color | Refer to photo |
| M258 | Plastic | grey | Refer to photo |
| M259 | Plastic | black | Refer to photo |
| M260 | Plastic | blue | Refer to photo |
| M261 | Metal | silver | Refer to photo |
| M262 | Metal + Coating | black | Refer to photo |
| M263 | Metal | gold | Refer to photo |
| M264 | Metal | coppery | Refer to photo |
| M265 | Metal | silver | Refer to photo |
| M266 | Plastic | black | Refer to photo |
| M267 | Plastic | black | Refer to photo |
| M268 | Metal | coppery | Refer to photo |

Test Report No.: 178167624a 001

Page 12 of 77

| Material No. | Material | Color | Location |
|--------------|-----------------|------------|----------------|
| M269 | Metal | silver | Refer to photo |
| M270 | Plastic | black | Refer to photo |
| M271 | Metal | silver | Refer to photo |
| M272 | Metal | gold | Refer to photo |
| M273 | Metal | gold | Refer to photo |
| M274 | Metal | coppery | Refer to photo |
| M275 | Metal | coppery | Refer to photo |
| M276 | Metal | coppery | Refer to photo |
| M277 | Metal | gold | Refer to photo |
| M278 | Metal | coppery | Refer to photo |
| M279 | Plastic | cream | Refer to photo |
| M280 | Metal | grey | Refer to photo |
| M281 | Metal | grey | Refer to photo |
| M282 | Metal | coppery | Refer to photo |
| M283 | Metal | grey | Refer to photo |
| M284 | Metal | grey | Refer to photo |
| M285 | Metal | black | Refer to photo |
| M286 | Plastic | black | Refer to photo |
| M287 | Metal + coating | black | Refer to photo |
| M288 | Plastic | white | Refer to photo |
| M289 | Plastic | red/pink | Refer to photo |
| M290 | Plastic | black/pink | Refer to photo |
| M291 | Plastic | black | Refer to photo |
| M292 | Plastic | black | Refer to photo |
| M293 | Plastic | black | Refer to photo |
| M294 | Plastic | black | Refer to photo |
| M295 | Plastic | black | Refer to photo |
| M296 | Plastic | black | Refer to photo |
| M297 | Plastic | cream | Refer to photo |
| M298 | Plastic | green | Refer to photo |

Test Report No.: 178167624a 001

Page 13 of 77

| Material No. | Material | Color | Location |
|--------------|-------------------------------|--------------|----------------|
| M299 | Metal | grey | Refer to photo |
| M300 | Plastic | yellow/green | Refer to photo |
| M301 | Plastic | red/pink | Refer to photo |
| M302 | Plastic | white | Refer to photo |
| M303 | Plastic | black | Refer to photo |
| M304 | Plastic | yellow/green | Refer to photo |
| M305 | Metal | silver | Refer to photo |
| M306 | Plastic | blue | Refer to photo |
| M307 | Electronic components | beige | Refer to photo |
| M308 | Plastic | black | Refer to photo |
| M309 | Plastic | brown | Refer to photo |
| M310 | Plastic | blue | Refer to photo |
| M311 | Plastic | white | Refer to photo |
| M312 | Plastic | black | Refer to photo |
| M313 | Metal | silver | Refer to photo |
| M314 | Plastic | black | Refer to photo |
| M315 | Plastic | blue | Refer to photo |
| M316 | Plastic | brown | Refer to photo |
| M317 | Metal | silver | Refer to photo |
| M318 | Metal | silver | Refer to photo |
| M319 | Metal | coppery | Refer to photo |
| M320 | Metal | silver | Refer to photo |
| M321 | Metal | coppery | Refer to photo |
| M322 | Metal | blue | Refer to photo |
| M323 | Metal + Coating | blue | Refer to photo |
| M324 | Foam | black | Refer to photo |
| M325 | Plastic + printing + adhesive | grey/black | Refer to photo |
| M326 | Wood | nature | Refer to photo |
| M327 | Foam | white | Refer to photo |
| M328 | Metal | silver | Refer to photo |

Test Report No.: 178167624a 001 Page 14 of 77

| Material No. | Material | Color | Location |
|--------------|-----------------|-------------|----------------|
| M329 | Metal | grey | Refer to photo |
| M330 | Plastic | multi-color | Refer to photo |
| M331 | Plastic | cream | Refer to photo |
| M332 | Metal | grey | Refer to photo |
| M333 | Metal | grey | Refer to photo |
| M334 | Metal | grey | Refer to photo |
| M335 | Plastic | black | Refer to photo |
| M336 | Plastic | white | Refer to photo |
| M337 | Plastic | black | Refer to photo |
| M338 | Metal | gold | Refer to photo |
| M339 | Metal | silver | Refer to photo |
| M340 | Metal | silver | Refer to photo |
| M341 | Plastic | cream | Refer to photo |
| M342 | Metal | black | Refer to photo |
| M343 | Metal | silver | Refer to photo |
| M344 | Metal | silver | Refer to photo |
| M345 | Plastic | black | Refer to photo |
| M346 | Textile | pink | Refer to photo |
| M347 | Textile | white | Refer to photo |
| M348 | Glass + coating | grey | Refer to photo |
| M349 | Coating | black | Refer to photo |
| M350 | Coating | white | Refer to photo |
| M351 | Wood | nature | Refer to photo |
| M352 | Metal | grey | Refer to photo |
| M353 | Metal | coppery | Refer to photo |
| M354 | Coating | black | Refer to photo |
| M355 | Coating | black | Refer to photo |
| M356 | Metal | silver | Refer to photo |
| M357 | Plastic | black | Refer to photo |
| M358 | Plastic | red | Refer to photo |

Test Report No.: 178167624a 001

Page 15 of 77

| Material No. | Material | Color | Location |
|--------------|-----------------|-------------|----------------|
| M359 | Plastic | white | Refer to photo |
| M360 | Glue | translucent | Refer to photo |
| M361 | Glue | black | Refer to photo |
| M362 | Glue | white | Refer to photo |
| M363 | Glue | grey | Refer to photo |
| M364 | Plastic | red | Refer to photo |
| M365 | Metal | brass | Refer to photo |
| M366 | Metal | silver | Refer to photo |
| M367 | Plastic | cream | Refer to photo |
| M368 | Plastic | red | Refer to photo |
| M369 | Paper | brown | Refer to photo |
| M370 | Plastic | black | Refer to photo |
| M371 | Metal | golden | Refer to photo |
| M372 | Metal | black | Refer to photo |
| M373 | Metal | grey | Refer to photo |
| M374 | Plastic | cream | Refer to photo |
| M375 | Plastic | white | Refer to photo |
| M376 | Metal | silver | Refer to photo |
| M377 | Plastic | blue | Refer to photo |
| M378 | Plastic | red | Refer to photo |
| M379 | Metal | silver | Refer to photo |
| M380 | Metal | silver | Refer to photo |
| M381 | Metal | silver | Refer to photo |
| M382 | Metal | coppery | Refer to photo |
| M383 | Metal | coppery | Refer to photo |
| M384 | Metal | silver | Refer to photo |
| M385 | Plastic | grey | Refer to photo |
| M387 | Metal | coppery | Refer to photo |
| M388 | Glass + coating | white | Refer to photo |

Test Report No.: 178167624a 001

Page 16 of 77

| Material No. | Material | Color | Location |
|--------------|-----------------------|--------------|----------------|
| M389 | Plastic | white | Refer to photo |
| M390 | Plastic | black | Refer to photo |
| M391 | Plastic | red | Refer to photo |
| M392 | Plastic | black | Refer to photo |
| M393 | Metal | silver | Refer to photo |
| M394 | Solder | silver | Refer to photo |
| M395 | Plastic | white | Refer to photo |
| M396 | Plastic | white | Refer to photo |
| M397 | Plastic | black | Refer to photo |
| M398 | Glass + coating | dark grey | Refer to photo |
| M399 | Plastic | black | Refer to photo |
| M400 | Plastic | grey | Refer to photo |
| M401 | Plastic | white | Refer to photo |
| M402 | Plastic | black | Refer to photo |
| M403 | Plastic | cream | Refer to photo |
| M404 | Plastic | black | Refer to photo |
| M405 | PCB board | green | Refer to photo |
| M406 | Electronic components | black | Refer to photo |
| M407 | Plastic | dark red | Refer to photo |
| M408 | Plastic | black | Refer to photo |
| M409 | PCB board | green | Refer to photo |
| M410 | Metal | grey | Refer to photo |
| M411 | Plastic | cream | Refer to photo |
| M412 | Metal | silver | Refer to photo |
| M413 | Plastic | brown | Refer to photo |
| M414 | Plastic | yellow/green | Refer to photo |
| M415 | Plastic | blue | Refer to photo |
| M416 | Plastic | black | Refer to photo |
| M417 | Metal | silver | Refer to photo |
| M418 | Metal | silver | Refer to photo |

Test Report No.: 178167624a 001

Page 17 of 77

| Material No. | Material | Color | Location |
|--------------|-----------------|--------|----------------|
| M419 | Metal | silver | Refer to photo |
| M420 | Metal | black | Refer to photo |
| M421 | Metal | grey | Refer to photo |
| M422 | Coating | cream | Refer to photo |
| M423 | Coating | black | Refer to photo |
| M424 | Metal + coating | black | Refer to photo |
| M425 | Metal | grey | Refer to photo |
| M426 | Plastic | black | Refer to photo |
| M427 | Plastic | cream | Refer to photo |
| M428 | Plastic | cream | Refer to photo |
| M429 | Plastic | black | Refer to photo |
| M430 | Plastic | black | Refer to photo |
| M431 | Plastic | black | Refer to photo |
| M432 | Plastic | brown | Refer to photo |
| M433 | Plastic | blue | Refer to photo |
| M434 | Plastic | black | Refer to photo |
| M435 | Plastic | white | Refer to photo |
| M436 | Metal | silver | Refer to photo |
| M437 | Metal | silver | Refer to photo |
| M438 | Metal | silver | Refer to photo |
| M439 | Metal | silver | Refer to photo |
| M440 | Metal | silver | Refer to photo |
| M441 | Plastic | black | Refer to photo |
| M442 | Plastic | red | Refer to photo |
| M443 | Metal | silver | Refer to photo |
| M444 | Plastic | black | Refer to photo |
| M445 | Plastic | black | Refer to photo |
| M446 | Metal + coating | black | Refer to photo |
| M447 | Rubber | black | Refer to photo |
| M448 | Coating | white | Refer to photo |
| M457 | Metal + coating | grey | Refer to photo |

Test Report No.: 178167624a 001

Page 18 of 77

| Material No. | Material | Color | Location |
|--------------|-----------------------|-------------|----------------|
| M449 | Metal | black | Refer to photo |
| M450 | Metal | silver | Refer to photo |
| M451 | Metal | silver | Refer to photo |
| M452 | Plastic | translucent | Refer to photo |
| M453 | Plastic | white | Refer to photo |
| M454 | Plastic | transparent | Refer to photo |
| M455 | PCB board | white | Refer to photo |
| M456 | Stone | white | Refer to photo |
| M458 | Plastic | grey | Refer to photo |
| M459 | Plastic | white | Refer to photo |
| M460 | Plastic | black | Refer to photo |
| M461 | Metal | silver | Refer to photo |
| M462 | Metal | black | Refer to photo |
| M463 | Plastic | cream | Refer to photo |
| M464 | Metal | black | Refer to photo |
| M465 | Metal | silver | Refer to photo |
| M466 | Metal | silver | Refer to photo |
| M467 | Metal | dark grey | Refer to photo |
| M468 | Metal | grey | Refer to photo |
| M469 | Plastic | white | Refer to photo |
| M470 | Electronic components | black | Refer to photo |
| M471 | Electronic components | black | Refer to photo |
| M472 | Electronic components | black | Refer to photo |
| M473 | Metal | silver | Refer to photo |
| M474 | Electronic components | black | Refer to photo |
| M475 | PCB board | green | Refer to photo |
| M476 | Electronic components | green | Refer to photo |
| M477 | Electronic components | grey | Refer to photo |
| M478 | Electronic components | black | Refer to photo |
| M487 | Plastic | white | Refer to photo |
| M488 | Plastic | white | Refer to photo |

Test Report No.: 178167624a 001

Page 19 of 77

| Material No. | Material | Color | Location |
|--------------|-----------------|-------------|----------------|
| M479 | PCB board | yellow | Refer to photo |
| M480 | Plastic | black | Refer to photo |
| M481 | Metal | silver | Refer to photo |
| M482 | Plastic | red | Refer to photo |
| M483 | Plastic | black | Refer to photo |
| M484 | Plastic | green | Refer to photo |
| M485 | Glass | black | Refer to photo |
| M486 | Plastic | translucent | Refer to photo |
| M489 | Plastic | white | Refer to photo |
| M490 | Plastic | black | Refer to photo |
| M491 | Metal | silver | Refer to photo |
| M492 | Plastic | black | Refer to photo |
| M493 | Foam + adhesive | black | Refer to photo |
| M494 | PCB board | green | Refer to photo |
| M495 | PCB board | white | Refer to photo |
| M496 | Plastic | grey/blue | Refer to photo |
| M497 | Plastic | black | Refer to photo |
| M498 | Plastic | grey/red | Refer to photo |
| M499 | PCB board | green | Refer to photo |
| M500 | Metal | silver | Refer to photo |
| M501 | Plastic | white | Refer to photo |
| M502 | Plastic | cream | Refer to photo |
| M503 | Metal | silver | Refer to photo |
| M504 | Plastic | black | Refer to photo |
| M505 | Metal | golden | Refer to photo |
| M506 | Plastic | black | Refer to photo |

Test Report No.: 178167624a 001

Page 20 of 77

| Material No. | Material | Color | Location |
|--------------|-----------------|--------|----------------|
| M507 | Plastic | white | Refer to photo |
| M508 | Metal | silver | Refer to photo |
| M509 | PCB board | blue | Refer to photo |
| M510 | Metal | silver | Refer to photo |
| M511 | Metal | silver | Refer to photo |
| M512 | Metal | silver | Refer to photo |
| M513 | Plastic | white | Refer to photo |
| M514 | Metal | black | Refer to photo |
| M515 | Magnet | silver | Refer to photo |
| M516 | Metal | silver | Refer to photo |
| M517 | Plastic | black | Refer to photo |
| M518 | Plastic | black | Refer to photo |
| M519 | Metal | silver | Refer to photo |
| M520 | Metal | silver | Refer to photo |
| M521 | Metal | silver | Refer to photo |
| M522 | Metal | silver | Refer to photo |
| M523 | Plastic | grey | Refer to photo |
| M524 | Metal + coating | black | Refer to photo |
| M525 | Plastic | grey | Refer to photo |
| M526 | Metal | silver | Refer to photo |
| M527 | Metal | silver | Refer to photo |
| M528 | Metal | silver | Refer to photo |
| M529 | Metal | black | Refer to photo |
| M530 | Plastic | orange | Refer to photo |
| M531 | Metal | silver | Refer to photo |
| M532 | Plastic | grey | Refer to photo |
| M533 | Plastic | white | Refer to photo |
| M534 | Plastic | red | Refer to photo |
| M535 | Plastic | black | Refer to photo |
| M536 | Plastic | green | Refer to photo |
| M537 | Plastic | white | Refer to photo |

Test Report No.: 178167624a 001

Page 21 of 77

| Material No. | Material | Color | Location |
|--------------|-----------|----------|----------------|
| M538 | Plastic | green | Refer to photo |
| M539 | Metal | silver | Refer to photo |
| M540 | Plastic | green | Refer to photo |
| M541 | Metal | black | Refer to photo |
| M542 | Plastic | cream | Refer to photo |
| M543 | PCB board | green | Refer to photo |
| M544 | Plastic | dark red | Refer to photo |
| M545 | Plastic | black | Refer to photo |
| M546 | Plastic | brown | Refer to photo |
| M547 | Plastic | blue | Refer to photo |
| M548 | Plastic | black | Refer to photo |
| M549 | Plastic | black | Refer to photo |
| M550 | Plastic | black | Refer to photo |
| M551 | Plastic | white | Refer to photo |
| M552 | Solder | silver | Refer to photo |
| M553 | PCB board | green | Refer to photo |
| M554 | Plastic | blue | Refer to photo |
| M555 | Plastic | brown | Refer to photo |
| M556 | Plastic | black | Refer to photo |
| M557 | Plastic | black | Refer to photo |
| M558 | Plastic | black | Refer to photo |
| M559 | Plastic | red | Refer to photo |
| M560 | Plastic | black | Refer to photo |
| M561 | Metal | golden | Refer to photo |
| M562 | Metal | silver | Refer to photo |
| M563 | Metal | black | Refer to photo |
| M564 | Metal | silver | Refer to photo |
| M565 | Metal | silver | Refer to photo |
| M566 | Metal | silver | Refer to photo |
| M567 | Metal | silver | Refer to photo |
| M568 | Plastic | black | Refer to photo |

Test Report No.: 178167624a 001

Page 22 of 77

| Material No. | Material | Color | Location |
|--------------|-------------------------------|-----------------|----------------|
| M569 | Plastic | black | Refer to photo |
| M570 | Plastic | translucent | Refer to photo |
| M571 | Plastic | transparent lue | Refer to photo |
| M572 | Metal | silver | Refer to photo |
| M573 | Plastic | black | Refer to photo |
| M574 | Plastic | white | Refer to photo |
| M575 | Electronic components | silver/blue | Refer to photo |
| M576 | PCB board | green | Refer to photo |
| M577 | Plastic | grey | Refer to photo |
| M578 | Plastic | grey | Refer to photo |
| M579 | Plastic | cream | Refer to photo |
| M580 | Plastic | beige | Refer to photo |
| M581 | Metal | grey | Refer to photo |
| M582 | Plastic | black | Refer to photo |
| M583 | Plastic | brown | Refer to photo |
| M584 | Plastic | blue | Refer to photo |
| M585 | Plastic | transparent | Refer to photo |
| M586 | Plastic | yellow/green | Refer to photo |
| M587 | Plastic | white | Refer to photo |
| M588 | Plastic | black | Refer to photo |
| M589 | Plastic | dark grey | Refer to photo |
| M590 | Plastic | grey | Refer to photo |
| M591 | Metal | silver | Refer to photo |
| M592 | Plastic | translucent | Refer to photo |
| M593 | Coating | white | Refer to photo |
| M594 | Plastic | black | Refer to photo |
| M595 | Plastic + printing + adhesive | white/red | Refer to photo |

Test Report No.: 178167624a 001

Page 23 of 77

| Material No. | Material | Color | Location |
|--------------|-------------------------------|-----------------|----------------|
| M596 | Plastic + printing + adhesive | yellow/red | Refer to photo |
| M597 | Plastic + printing + adhesive | white/black/red | Refer to photo |
| M598 | Plastic + printing + adhesive | multi-color | Refer to photo |
| M599 | Plastic | black | Refer to photo |
| M600 | Plastic | blue | Refer to photo |
| M601 | Foam | black | Refer to photo |

Remark: It was requested by applicant, only the selected material in the submitted sample was tested, the detail of tested material was listed in the result pages.

1.Screening Test by XRF spectroscopy

 Test Method: Cadmium, Lead, Mercury, Chromium, Bromine
 -- With reference to IEC 62321-3-1:2013

Test Result:

| Material No. | Cd | Cr | Pb | Hg | Br |
|--------------|----|--------|----|----|--------|
| M001 | BL | BL | BL | BL | BL |
| M002 | BL | BL | BL | BL | BL |
| M003 | BL | BL | BL | BL | n.a. |
| M004 | BL | BL | BL | BL | BL |
| M005 | BL | BL | BL | BL | BL |
| M006 | BL | BL | BL | BL | n.a. |
| M007 | BL | BL | BL | BL | BL |
| M008 | BL | BL | BL | BL | BL |
| M009 | BL | BL | BL | BL | BL |
| M010 | BL | BL | BL | BL | BL |
| M011 | BL | BL | BL | BL | BL |
| M012 | BL | BL | BL | BL | d.(*1) |
| M013 | BL | BL | BL | BL | BL |
| M014 | BL | BL | BL | BL | BL |
| M015 | BL | BL | BL | BL | BL |
| M016 | BL | BL | BL | BL | BL |
| M017 | BL | BL | BL | BL | BL |
| M018 | BL | BL | BL | BL | n.a. |
| M019 | BL | BL | BL | BL | BL |
| M020 | BL | BL | BL | BL | n.a. |
| M021 | BL | BL | BL | BL | BL |
| M022 | BL | BL | BL | BL | d.(*1) |
| M023 | BL | BL | BL | BL | n.a. |
| M024 | BL | BL | BL | BL | d.(*1) |
| M025 | BL | BL | BL | BL | BL |
| M026 | BL | BL | BL | BL | n.a. |
| M027 | BL | BL | BL | BL | BL |
| M028 | BL | BL | BL | BL | BL |
| M029 | BL | BL | BL | BL | BL |
| M030 | BL | BL | BL | BL | BL |
| M031 | BL | BL | BL | BL | BL |
| M032 | BL | BL | BL | BL | n.a. |
| M033 | BL | BL | BL | BL | n.a. |
| M034 | BL | d.(*1) | BL | BL | n.a. |
| M035 | BL | BL | BL | BL | n.a. |
| M036 | BL | BL | BL | BL | n.a. |
| M037 | BL | BL | BL | BL | BL |

Test Report No.: 178167624a 001 Page 25 of 77

| | | | | | |
|------|----|--------|--------|--------|--------|
| M038 | BL | BL | BL | BL | BL |
| M039 | BL | d.(*1) | BL | BL | n.a. |
| M040 | BL | d.(*1) | BL | BL | n.a. |
| M041 | BL | BL | BL | BL | n.a. |
| M042 | BL | d.(*1) | BL | BL | n.a. |
| M043 | BL | BL | d.(*1) | BL | n.a. |
| M044 | BL | BL | BL | BL | BL |
| M045 | BL | BL | BL | BL | BL |
| M046 | BL | BL | BL | BL | BL |
| M047 | BL | BL | BL | BL | BL |
| M048 | BL | BL | BL | BL | BL |
| M049 | BL | BL | BL | BL | BL |
| M050 | BL | BL | BL | BL | n.a. |
| M051 | BL | BL | BL | BL | BL |
| M052 | BL | BL | BL | BL | BL |
| M053 | BL | BL | BL | BL | d.(*1) |
| M054 | BL | BL | BL | BL | BL |
| M055 | BL | BL | BL | BL | BL |
| M056 | BL | BL | BL | BL | BL |
| M057 | BL | BL | BL | BL | BL |
| M058 | BL | BL | BL | BL | BL |
| M059 | BL | BL | BL | BL | BL |
| M060 | BL | d.(*1) | BL | BL | n.a. |
| M061 | BL | BL | BL | BL | BL |
| M062 | BL | BL | BL | BL | d.(*1) |
| M063 | BL | BL | BL | BL | d.(*1) |
| M064 | BL | BL | BL | BL | d.(*1) |
| M065 | BL | BL | BL | BL | BL |
| M066 | BL | BL | BL | BL | BL |
| M067 | BL | BL | BL | d.(*1) | n.a. |
| M068 | BL | d.(*1) | BL | BL | d.(*1) |
| M069 | BL | BL | BL | BL | d.(*1) |
| M070 | BL | BL | BL | BL | d.(*1) |
| M071 | BL | BL | BL | BL | n.a. |
| M072 | BL | BL | BL | BL | BL |
| M073 | BL | BL | BL | BL | BL |
| M074 | BL | BL | BL | BL | BL |
| M075 | BL | BL | BL | BL | BL |
| M076 | BL | BL | BL | BL | BL |
| M077 | BL | BL | BL | BL | BL |
| M078 | BL | BL | BL | d.(*1) | d.(*1) |
| M079 | BL | BL | BL | BL | BL |
| M080 | BL | BL | BL | BL | d.(*1) |

Test Report No.: 178167624a 001 Page 26 of 77

| | | | | | |
|------|----|----|--------|--------|--------|
| M081 | BL | BL | BL | d.(*1) | n.a. |
| M082 | BL | BL | BL | BL | d.(*1) |
| M083 | BL | BL | BL | BL | BL |
| M084 | BL | BL | BL | BL | BL |
| M085 | BL | BL | BL | BL | BL |
| M086 | BL | BL | BL | BL | n.a. |
| M087 | BL | BL | BL | BL | d.(*1) |
| M088 | BL | BL | BL | BL | BL |
| M089 | BL | BL | BL | BL | d.(*1) |
| M090 | BL | BL | BL | BL | BL |
| M091 | BL | BL | BL | BL | d.(*1) |
| M092 | BL | BL | BL | BL | BL |
| M093 | BL | BL | BL | BL | n.a. |
| M094 | BL | BL | BL | BL | n.a. |
| M095 | BL | BL | BL | BL | BL |
| M096 | BL | BL | BL | BL | BL |
| M097 | BL | BL | BL | BL | BL |
| M098 | BL | BL | BL | BL | BL |
| M099 | BL | BL | BL | BL | BL |
| M100 | BL | BL | BL | BL | d.(*1) |
| M101 | BL | BL | BL | BL | BL |
| M102 | BL | BL | BL | BL | d.(*1) |
| M103 | BL | BL | BL | BL | BL |
| M104 | BL | BL | BL | BL | d.(*1) |
| M105 | BL | BL | d.(*1) | BL | n.a. |
| M106 | BL | BL | d.(*1) | BL | BL |
| M107 | BL | BL | BL | BL | n.a. |
| M108 | BL | BL | BL | BL | BL |
| M109 | BL | BL | BL | BL | BL |
| M110 | BL | BL | BL | BL | BL |
| M111 | BL | BL | BL | BL | BL |
| M112 | BL | BL | BL | BL | BL |
| M113 | BL | BL | BL | BL | BL |
| M114 | BL | BL | BL | BL | BL |
| M115 | BL | BL | BL | BL | BL |
| M116 | BL | BL | BL | BL | BL |
| M117 | BL | BL | BL | BL | n.a. |
| M118 | BL | BL | BL | BL | BL |
| M119 | BL | BL | BL | BL | BL |
| M120 | BL | BL | BL | BL | BL |
| M121 | BL | BL | BL | BL | BL |
| M122 | BL | BL | BL | BL | BL |
| M123 | BL | BL | BL | BL | BL |

Test Report No.: 178167624a 001 Page 27 of 77

| | | | | | |
|------|--------|--------|--------|--------|--------|
| M124 | BL | d.(*1) | BL | BL | n.a. |
| M125 | BL | d.(*1) | BL | BL | n.a. |
| M126 | BL | BL | BL | BL | BL |
| M127 | BL | BL | BL | BL | BL |
| M128 | BL | d.(*1) | BL | BL | n.a. |
| M129 | BL | BL | BL | BL | BL |
| M130 | BL | BL | BL | BL | n.a. |
| M131 | BL | BL | BL | BL | BL |
| M132 | BL | BL | BL | BL | d.(*1) |
| M133 | BL | BL | BL | BL | BL |
| M134 | BL | BL | BL | BL | BL |
| M135 | BL | BL | BL | BL | d.(*1) |
| M136 | BL | BL | BL | BL | n.a. |
| M137 | BL | BL | BL | BL | d.(*1) |
| M138 | BL | BL | BL | BL | BL |
| M139 | BL | BL | BL | BL | d.(*1) |
| M140 | BL | BL | d.(*1) | BL | n.a. |
| M141 | d.(*1) | BL | d.(*1) | BL | n.a. |
| M142 | BL | BL | d.(*1) | BL | d.(*1) |
| M143 | BL | BL | d.(*1) | BL | BL |
| M144 | BL | BL | BL | BL | BL |
| M145 | BL | BL | BL | d.(*1) | d.(*1) |
| M146 | BL | BL | BL | BL | n.a. |
| M147 | BL | BL | BL | BL | BL |
| M148 | BL | BL | BL | BL | BL |
| M149 | BL | BL | BL | BL | BL |
| M150 | BL | BL | BL | BL | BL |
| M151 | BL | BL | BL | BL | BL |
| M152 | BL | BL | BL | BL | BL |
| M153 | BL | BL | BL | BL | BL |
| M154 | BL | BL | BL | BL | BL |
| M155 | BL | BL | BL | BL | BL |
| M156 | BL | BL | BL | BL | BL |
| M157 | BL | BL | BL | BL | d.(*1) |
| M158 | BL | BL | BL | BL | n.a. |
| M159 | BL | BL | d.(*1) | BL | n.a. |
| M160 | BL | BL | BL | BL | BL |
| M161 | BL | BL | BL | BL | BL |
| M162 | BL | BL | BL | BL | BL |
| M163 | BL | BL | BL | BL | BL |
| M164 | BL | BL | BL | BL | n.a. |
| M165 | BL | d.(*1) | BL | BL | n.a. |
| M166 | BL | d.(*1) | BL | BL | n.a. |

Test Report No.: 178167624a 001

Page 28 of 77

| | | | | | |
|------|----|--------|----|----|------|
| M167 | BL | d.(*1) | BL | BL | n.a. |
| M168 | BL | d.(*1) | BL | BL | n.a. |
| M169 | BL | BL | BL | BL | BL |
| M170 | BL | d.(*1) | BL | BL | n.a. |
| M171 | BL | BL | BL | BL | BL |
| M172 | BL | BL | BL | BL | BL |
| M173 | BL | d.(*1) | BL | BL | n.a. |
| M174 | BL | BL | BL | BL | BL |
| M175 | BL | BL | BL | BL | BL |
| M176 | BL | BL | BL | BL | BL |
| M177 | BL | BL | BL | BL | BL |
| M178 | BL | BL | BL | BL | BL |
| M179 | BL | BL | BL | BL | BL |
| M180 | BL | BL | BL | BL | BL |
| M181 | BL | BL | BL | BL | BL |
| M182 | BL | BL | BL | BL | n.a. |
| M183 | BL | BL | BL | BL | BL |
| M184 | BL | BL | BL | BL | BL |
| M185 | BL | BL | BL | BL | n.a. |
| M186 | BL | BL | BL | BL | BL |
| M187 | BL | BL | BL | BL | BL |
| M188 | BL | BL | BL | BL | BL |
| M189 | BL | BL | BL | BL | BL |
| M190 | BL | BL | BL | BL | BL |
| M191 | BL | BL | BL | BL | BL |
| M192 | BL | BL | BL | BL | BL |
| M193 | BL | BL | BL | BL | BL |
| M194 | BL | BL | BL | BL | BL |
| M195 | BL | BL | BL | BL | n.a. |
| M196 | BL | BL | BL | BL | BL |
| M197 | BL | BL | BL | BL | BL |
| M198 | BL | d.(*1) | BL | BL | n.a. |
| M199 | BL | d.(*1) | BL | BL | n.a. |
| M200 | BL | d.(*1) | BL | BL | n.a. |
| M201 | BL | d.(*1) | BL | BL | n.a. |
| M202 | BL | BL | BL | BL | n.a. |
| M203 | BL | BL | BL | BL | n.a. |
| M204 | BL | BL | BL | BL | n.a. |
| M205 | BL | d.(*1) | BL | BL | n.a. |
| M206 | BL | BL | BL | BL | n.a. |
| M207 | BL | BL | BL | BL | n.a. |
| M208 | BL | BL | BL | BL | n.a. |
| M209 | BL | BL | BL | BL | n.a. |

Test Report No.: 178167624a 001 Page 29 of 77

| | | | | | |
|------|----|--------|----|----|--------|
| M210 | BL | d.(*1) | BL | BL | n.a. |
| M211 | BL | d.(*1) | BL | BL | n.a. |
| M212 | BL | d.(*1) | BL | BL | n.a. |
| M213 | BL | BL | BL | BL | n.a. |
| M214 | BL | BL | BL | BL | n.a. |
| M215 | BL | d.(*1) | BL | BL | n.a. |
| M216 | BL | d.(*1) | BL | BL | n.a. |
| M217 | BL | BL | BL | BL | BL |
| M218 | BL | BL | BL | BL | n.a. |
| M219 | BL | BL | BL | BL | BL |
| M220 | BL | BL | BL | BL | BL |
| M221 | BL | d.(*1) | BL | BL | n.a. |
| M222 | BL | d.(*1) | BL | BL | n.a. |
| M223 | BL | BL | BL | BL | BL |
| M224 | BL | d.(*1) | BL | BL | n.a. |
| M225 | BL | d.(*1) | BL | BL | n.a. |
| M226 | BL | BL | BL | BL | d.(*1) |
| M227 | BL | d.(*1) | BL | BL | n.a. |
| M228 | BL | BL | BL | BL | BL |
| M229 | BL | d.(*1) | BL | BL | n.a. |
| M230 | BL | BL | BL | BL | BL |
| M231 | BL | BL | BL | BL | BL |
| M232 | BL | BL | BL | BL | BL |
| M233 | BL | d.(*1) | BL | BL | n.a. |
| M234 | BL | BL | BL | BL | n.a. |
| M235 | BL | BL | BL | BL | n.a. |
| M236 | BL | BL | BL | BL | BL |
| M237 | BL | BL | BL | BL | n.a. |
| M238 | BL | d.(*1) | BL | BL | n.a. |
| M239 | BL | d.(*1) | BL | BL | n.a. |
| M240 | BL | BL | BL | BL | BL |
| M241 | BL | BL | BL | BL | n.a. |
| M242 | BL | BL | BL | BL | n.a. |
| M243 | BL | BL | BL | BL | BL |
| M244 | BL | BL | BL | BL | BL |
| M245 | BL | BL | BL | BL | n.a. |
| M246 | BL | BL | BL | BL | n.a. |
| M247 | BL | BL | BL | BL | BL |
| M248 | BL | BL | BL | BL | BL |
| M249 | BL | BL | BL | BL | d.(*1) |
| M250 | BL | BL | BL | BL | BL |
| M251 | BL | BL | BL | BL | d.(*1) |
| M252 | BL | BL | BL | BL | BL |

Test Report No.: 178167624a 001 Page 30 of 77

| | | | | | |
|------|--------|--------|--------|----|--------|
| M253 | BL | BL | BL | BL | d.(*1) |
| M254 | BL | BL | BL | BL | BL |
| M255 | BL | BL | BL | BL | BL |
| M256 | BL | BL | BL | BL | BL |
| M257 | BL | BL | BL | BL | BL |
| M258 | BL | BL | BL | BL | BL |
| M259 | BL | BL | BL | BL | BL |
| M260 | BL | BL | BL | BL | d.(*1) |
| M261 | BL | BL | BL | BL | n.a. |
| M262 | BL | BL | BL | BL | BL |
| M263 | BL | BL | BL | BL | n.a. |
| M264 | BL | BL | BL | BL | n.a. |
| M265 | BL | d.(*1) | BL | BL | n.a. |
| M266 | BL | BL | BL | BL | BL |
| M267 | d.(*1) | BL | BL | BL | d.(*1) |
| M268 | BL | BL | BL | BL | n.a. |
| M269 | BL | d.(*1) | BL | BL | n.a. |
| M270 | BL | BL | BL | BL | d.(*1) |
| M271 | BL | d.(*1) | BL | BL | n.a. |
| M272 | BL | BL | d.(*1) | BL | n.a. |
| M273 | BL | BL | d.(*1) | BL | n.a. |
| M274 | BL | BL | BL | BL | n.a. |
| M275 | BL | BL | BL | BL | n.a. |
| M276 | BL | BL | BL | BL | n.a. |
| M277 | BL | BL | d.(*1) | BL | n.a. |
| M278 | BL | BL | BL | BL | n.a. |
| M279 | BL | BL | BL | BL | BL |
| M280 | BL | BL | BL | BL | n.a. |
| M281 | BL | BL | BL | BL | n.a. |
| M282 | BL | BL | BL | BL | n.a. |
| M283 | BL | d.(*1) | BL | BL | n.a. |
| M284 | BL | d.(*1) | d.(*1) | BL | n.a. |
| M285 | BL | d.(*1) | BL | BL | n.a. |
| M286 | BL | BL | BL | BL | BL |
| M287 | BL | BL | BL | BL | n.a. |
| M288 | BL | BL | BL | BL | BL |
| M289 | BL | BL | BL | BL | BL |
| M290 | BL | BL | BL | BL | BL |
| M291 | BL | BL | BL | BL | d.(*1) |
| M292 | BL | BL | BL | BL | BL |
| M293 | BL | BL | BL | BL | BL |
| M294 | BL | BL | BL | BL | BL |
| M295 | BL | BL | BL | BL | BL |

Test Report No.: 178167624a 001 Page 31 of 77

| | | | | | |
|------|--------|--------|----|----|--------|
| M296 | BL | BL | BL | BL | BL |
| M297 | d.(*1) | BL | BL | BL | d.(*1) |
| M298 | BL | BL | BL | BL | BL |
| M299 | BL | d.(*1) | BL | BL | n.a. |
| M300 | BL | BL | BL | BL | BL |
| M301 | BL | BL | BL | BL | BL |
| M302 | BL | BL | BL | BL | BL |
| M303 | BL | BL | BL | BL | BL |
| M304 | BL | BL | BL | BL | BL |
| M305 | BL | BL | BL | BL | n.a. |
| M306 | BL | BL | BL | BL | BL |
| M307 | BL | BL | BL | BL | BL |
| M308 | BL | BL | BL | BL | BL |
| M309 | BL | BL | BL | BL | BL |
| M310 | BL | BL | BL | BL | BL |
| M311 | BL | BL | BL | BL | d.(*1) |
| M312 | BL | BL | BL | BL | BL |
| M313 | BL | BL | BL | BL | n.a. |
| M314 | BL | BL | BL | BL | BL |
| M315 | BL | BL | BL | BL | BL |
| M316 | BL | BL | BL | BL | BL |
| M317 | BL | BL | BL | BL | n.a. |
| M318 | BL | BL | BL | BL | n.a. |
| M319 | BL | BL | BL | BL | n.a. |
| M320 | BL | d.(*1) | BL | BL | n.a. |
| M321 | BL | BL | BL | BL | n.a. |
| M322 | BL | BL | BL | BL | n.a. |
| M323 | BL | BL | BL | BL | BL |
| M324 | BL | BL | BL | BL | BL |
| M325 | BL | BL | BL | BL | BL |
| M326 | BL | BL | BL | BL | BL |
| M327 | BL | BL | BL | BL | d.(*1) |
| M328 | BL | d.(*1) | BL | BL | n.a. |
| M329 | BL | BL | BL | BL | n.a. |
| M330 | BL | BL | BL | BL | BL |
| M331 | BL | BL | BL | BL | BL |
| M332 | BL | BL | BL | BL | n.a. |
| M333 | BL | d.(*1) | BL | BL | n.a. |
| M334 | BL | BL | BL | BL | n.a. |
| M335 | BL | BL | BL | BL | BL |
| M336 | BL | BL | BL | BL | BL |
| M337 | BL | BL | BL | BL | BL |
| M338 | BL | BL | BL | BL | n.a. |

Test Report No.: 178167624a 001 Page 32 of 77

| | | | | | |
|------|--------|--------|----|----|--------|
| M339 | BL | d.(*1) | BL | BL | n.a. |
| M340 | BL | d.(*1) | BL | BL | n.a. |
| M341 | BL | BL | BL | BL | d.(*1) |
| M342 | BL | BL | BL | BL | n.a. |
| M343 | BL | d.(*1) | BL | BL | n.a. |
| M344 | BL | d.(*1) | BL | BL | n.a. |
| M345 | BL | BL | BL | BL | BL |
| M346 | BL | BL | BL | BL | BL |
| M347 | BL | BL | BL | BL | BL |
| M348 | BL | BL | BL | BL | n.a. |
| M349 | BL | BL | BL | BL | BL |
| M350 | BL | BL | BL | BL | BL |
| M351 | BL | BL | BL | BL | BL |
| M352 | BL | BL | BL | BL | n.a. |
| M353 | BL | BL | BL | BL | n.a. |
| M354 | BL | BL | BL | BL | BL |
| M355 | BL | BL | BL | BL | BL |
| M356 | BL | d.(*1) | BL | BL | n.a. |
| M357 | BL | BL | BL | BL | BL |
| M358 | BL | BL | BL | BL | BL |
| M359 | BL | BL | BL | BL | BL |
| M360 | BL | BL | BL | BL | BL |
| M361 | BL | BL | BL | BL | BL |
| M362 | BL | BL | BL | BL | BL |
| M363 | BL | BL | BL | BL | BL |
| M364 | BL | BL | BL | BL | BL |
| M365 | BL | BL | BL | BL | n.a. |
| M366 | BL | BL | BL | BL | n.a. |
| M367 | BL | BL | BL | BL | BL |
| M368 | BL | BL | BL | BL | BL |
| M369 | BL | BL | BL | BL | BL |
| M370 | BL | BL | BL | BL | BL |
| M371 | BL | BL | BL | BL | n.a. |
| M372 | BL | BL | BL | BL | n.a. |
| M373 | BL | BL | BL | BL | n.a. |
| M374 | BL | BL | BL | BL | d.(*1) |
| M375 | BL | BL | BL | BL | BL |
| M376 | BL | BL | BL | BL | n.a. |
| M377 | BL | BL | BL | BL | BL |
| M378 | BL | BL | BL | BL | BL |
| M379 | BL | BL | BL | BL | n.a. |
| M380 | d.(*1) | d.(*1) | BL | BL | n.a. |
| M381 | BL | d.(*1) | BL | BL | n.a. |

Test Report No.: 178167624a 001 Page 33 of 77

| | | | | | |
|------|--------|--------|--------|--------|--------|
| M382 | BL | BL | BL | BL | n.a. |
| M383 | BL | BL | BL | BL | n.a. |
| M384 | BL | BL | BL | BL | n.a. |
| M385 | BL | BL | BL | BL | BL |
| M386 | BL | BL | BL | BL | BL |
| M387 | BL | BL | BL | BL | n.a. |
| M388 | BL | BL | d.(*1) | BL | n.a. |
| M389 | BL | BL | BL | BL | BL |
| M390 | BL | BL | BL | BL | BL |
| M391 | BL | BL | BL | BL | BL |
| M392 | BL | BL | BL | BL | BL |
| M393 | d.(*1) | BL | BL | BL | n.a. |
| M394 | BL | BL | d.(*1) | BL | n.a. |
| M395 | BL | BL | BL | BL | BL |
| M396 | BL | BL | BL | BL | BL |
| M397 | BL | BL | BL | BL | BL |
| M398 | d.(*1) | d.(*1) | d.(*1) | BL | n.a. |
| M399 | BL | BL | BL | BL | BL |
| M400 | BL | BL | BL | BL | BL |
| M401 | BL | BL | BL | BL | BL |
| M402 | BL | BL | BL | BL | BL |
| M403 | BL | BL | BL | BL | BL |
| M404 | BL | BL | BL | BL | BL |
| M405 | BL | BL | BL | BL | d.(*1) |
| M406 | BL | BL | BL | BL | BL |
| M407 | BL | BL | d.(*1) | d.(*1) | BL |
| M408 | d.(*1) | BL | d.(*1) | d.(*1) | BL |
| M409 | BL | BL | BL | BL | d.(*1) |
| M410 | d.(*1) | BL | BL | BL | n.a. |
| M411 | BL | BL | BL | BL | BL |
| M412 | d.(*1) | BL | d.(*1) | d.(*1) | n.a. |
| M413 | BL | BL | BL | BL | BL |
| M414 | BL | BL | BL | BL | BL |
| M415 | BL | BL | BL | BL | BL |
| M416 | BL | BL | BL | BL | BL |
| M417 | BL | BL | BL | BL | n.a. |
| M418 | BL | d.(*1) | BL | BL | n.a. |
| M419 | BL | d.(*1) | BL | BL | n.a. |
| M420 | BL | d.(*1) | BL | BL | n.a. |
| M421 | BL | BL | BL | BL | n.a. |
| M422 | BL | BL | BL | BL | BL |
| M423 | BL | BL | BL | BL | BL |
| M424 | BL | BL | BL | BL | n.a. |

| | | | | | |
|------|--------|--------|--------|--------|--------|
| M425 | BL | BL | BL | BL | n.a. |
| M426 | BL | BL | BL | BL | BL |
| M427 | BL | BL | BL | BL | BL |
| M428 | BL | BL | BL | BL | d.(*1) |
| M429 | BL | BL | BL | BL | BL |
| M430 | BL | BL | BL | BL | d.(*1) |
| M431 | BL | BL | BL | BL | BL |
| M432 | BL | BL | BL | BL | BL |
| M433 | BL | BL | BL | BL | BL |
| M434 | BL | BL | BL | BL | BL |
| M435 | BL | BL | BL | BL | d.(*1) |
| M436 | BL | d.(*1) | BL | BL | n.a. |
| M437 | d.(*1) | d.(*1) | BL | BL | n.a. |
| M438 | d.(*1) | d.(*1) | BL | BL | n.a. |
| M439 | BL | d.(*1) | BL | BL | n.a. |
| M440 | BL | BL | BL | BL | n.a. |
| M441 | BL | BL | BL | BL | BL |
| M442 | BL | BL | BL | BL | BL |
| M443 | BL | d.(*1) | BL | BL | n.a. |
| M444 | BL | BL | BL | BL | BL |
| M445 | BL | BL | BL | BL | BL |
| M446 | BL | BL | BL | BL | n.a. |
| M447 | BL | BL | BL | BL | BL |
| M448 | BL | BL | BL | BL | BL |
| M449 | BL | d.(*1) | BL | BL | n.a. |
| M450 | d.(*1) | BL | d.(*1) | d.(*1) | n.a. |
| M451 | d.(*1) | BL | BL | BL | n.a. |
| M452 | BL | BL | BL | BL | BL |
| M453 | BL | BL | BL | BL | BL |
| M454 | BL | BL | BL | BL | BL |
| M455 | d.(*1) | BL | BL | BL | d.(*1) |
| M456 | BL | BL | BL | BL | n.a. |
| M457 | BL | BL | BL | BL | n.a. |
| M458 | BL | BL | BL | BL | BL |
| M459 | BL | BL | BL | BL | BL |
| M460 | BL | BL | BL | BL | BL |
| M461 | BL | d.(*1) | BL | BL | n.a. |
| M462 | BL | d.(*1) | BL | BL | n.a. |
| M463 | BL | BL | BL | BL | BL |
| M464 | BL | d.(*1) | BL | BL | n.a. |
| M465 | d.(*1) | d.(*1) | BL | BL | n.a. |
| M466 | d.(*1) | d.(*1) | BL | BL | n.a. |
| M467 | BL | BL | BL | BL | n.a. |

Test Report No.: 178167624a 001 Page 35 of 77

| | | | | | |
|------|--------|--------|--------|--------|--------|
| M468 | BL | BL | BL | BL | n.a. |
| M469 | BL | BL | BL | BL | BL |
| M470 | d.(*1) | BL | d.(*1) | BL | BL |
| M471 | BL | BL | BL | BL | BL |
| M472 | BL | BL | d.(*1) | d.(*1) | BL |
| M473 | BL | d.(*1) | BL | BL | n.a. |
| M474 | d.(*1) | d.(*1) | BL | BL | BL |
| M475 | BL | BL | BL | BL | d.(*1) |
| M476 | d.(*1) | BL | d.(*1) | d.(*1) | BL |
| M477 | BL | d.(*1) | BL | BL | BL |
| M478 | d.(*1) | BL | d.(*1) | d.(*1) | BL |
| M479 | BL | BL | BL | BL | BL |
| M480 | BL | BL | BL | BL | d.(*1) |
| M481 | BL | BL | BL | BL | n.a. |
| M482 | BL | BL | BL | BL | BL |
| M483 | BL | BL | BL | BL | BL |
| M484 | BL | BL | BL | BL | BL |
| M485 | BL | BL | BL | BL | n.a. |
| M486 | BL | BL | BL | BL | BL |
| M487 | BL | BL | BL | BL | BL |
| M488 | BL | BL | BL | BL | BL |
| M489 | BL | BL | BL | BL | BL |
| M490 | BL | BL | BL | BL | BL |
| M491 | d.(*1) | d.(*1) | BL | BL | n.a. |
| M492 | BL | BL | BL | BL | BL |
| M493 | BL | BL | BL | BL | BL |
| M494 | BL | BL | BL | BL | BL |
| M495 | BL | BL | BL | BL | BL |
| M496 | BL | BL | BL | BL | BL |
| M497 | BL | BL | BL | BL | d.(*1) |
| M498 | BL | BL | BL | BL | BL |
| M499 | BL | BL | BL | BL | BL |
| M500 | BL | d.(*1) | BL | BL | n.a. |
| M501 | BL | BL | BL | BL | BL |
| M502 | BL | d.(*1) | BL | BL | BL |
| M503 | BL | d.(*1) | d.(*1) | BL | n.a. |
| M504 | BL | BL | BL | BL | BL |
| M505 | d.(*1) | BL | BL | BL | n.a. |
| M506 | BL | BL | BL | BL | BL |
| M507 | BL | BL | BL | BL | BL |
| M508 | BL | BL | BL | BL | n.a. |
| M509 | BL | BL | BL | BL | d.(*1) |
| M510 | d.(*1) | d.(*1) | BL | BL | n.a. |

Test Report No.: 178167624a 001

| | | | | | |
|------|--------|--------|--------|--------|--------|
| M511 | BL | d.(*1) | d.(*1) | BL | n.a. |
| M512 | BL | d.(*1) | BL | BL | n.a. |
| M513 | BL | BL | BL | BL | BL |
| M514 | BL | BL | BL | BL | n.a. |
| M515 | d.(*1) | d.(*1) | d.(*1) | d.(*1) | n.a. |
| M516 | BL | BL | BL | BL | n.a. |
| M517 | BL | BL | BL | BL | BL |
| M518 | BL | BL | BL | BL | BL |
| M519 | BL | d.(*1) | BL | BL | n.a. |
| M520 | BL | d.(*1) | BL | BL | n.a. |
| M521 | d.(*1) | BL | BL | BL | n.a. |
| M522 | BL | d.(*1) | BL | BL | n.a. |
| M523 | BL | BL | BL | BL | BL |
| M524 | BL | BL | BL | BL | n.a. |
| M525 | BL | BL | BL | BL | BL |
| M526 | BL | BL | BL | BL | n.a. |
| M527 | d.(*1) | BL | BL | BL | n.a. |
| M528 | BL | BL | BL | BL | n.a. |
| M529 | BL | d.(*1) | BL | BL | n.a. |
| M530 | BL | BL | BL | BL | BL |
| M531 | BL | d.(*1) | BL | BL | n.a. |
| M532 | BL | BL | BL | BL | BL |
| M533 | BL | BL | BL | BL | BL |
| M534 | BL | BL | BL | BL | BL |
| M535 | BL | BL | BL | BL | d.(*1) |
| M536 | BL | d.(*1) | BL | BL | BL |
| M537 | BL | BL | BL | BL | BL |
| M538 | BL | BL | BL | BL | BL |
| M539 | BL | BL | BL | BL | n.a. |
| M540 | BL | BL | BL | BL | BL |
| M541 | BL | BL | BL | BL | n.a. |
| M542 | BL | BL | BL | BL | d.(*1) |
| M543 | BL | BL | BL | BL | d.(*1) |
| M544 | BL | BL | BL | BL | BL |
| M545 | BL | BL | BL | BL | BL |
| M546 | BL | BL | BL | BL | BL |
| M547 | BL | BL | BL | BL | BL |
| M548 | BL | BL | BL | BL | BL |
| M549 | BL | BL | BL | BL | d.(*1) |
| M550 | BL | BL | BL | BL | d.(*1) |
| M551 | BL | BL | BL | BL | d.(*1) |
| M552 | BL | BL | d.(*1) | BL | n.a. |
| M553 | BL | BL | BL | BL | d.(*1) |

Test Report No.: 178167624a 001 Page 37 of 77

| | | | | | |
|------|--------|--------|--------|--------|--------|
| M554 | BL | BL | BL | BL | BL |
| M555 | BL | BL | BL | BL | BL |
| M556 | BL | BL | BL | BL | BL |
| M557 | BL | BL | BL | BL | BL |
| M558 | BL | BL | BL | BL | BL |
| M559 | BL | BL | BL | BL | BL |
| M560 | BL | BL | BL | BL | BL |
| M561 | BL | d.(*1) | BL | BL | n.a. |
| M562 | BL | d.(*1) | BL | BL | n.a. |
| M563 | BL | BL | BL | BL | n.a. |
| M564 | BL | d.(*1) | BL | BL | n.a. |
| M565 | BL | BL | BL | BL | n.a. |
| M566 | BL | BL | BL | BL | n.a. |
| M567 | d.(*1) | BL | BL | BL | n.a. |
| M568 | BL | BL | BL | BL | BL |
| M569 | BL | BL | BL | BL | BL |
| M570 | BL | BL | BL | BL | BL |
| M571 | BL | BL | BL | BL | BL |
| M572 | BL | d.(*1) | BL | BL | n.a. |
| M573 | BL | BL | d.(*1) | d.(*1) | BL |
| M574 | d.(*1) | BL | d.(*1) | d.(*1) | BL |
| M575 | BL | BL | BL | d.(*1) | BL |
| M576 | BL | BL | BL | BL | d.(*1) |
| M577 | BL | BL | BL | BL | BL |
| M578 | BL | BL | BL | BL | BL |
| M579 | BL | BL | BL | BL | BL |
| M580 | BL | BL | BL | BL | BL |
| M581 | d.(*1) | d.(*1) | BL | BL | n.a. |
| M582 | BL | BL | BL | BL | BL |
| M583 | BL | BL | BL | BL | BL |
| M584 | BL | BL | BL | BL | BL |
| M585 | BL | BL | BL | BL | BL |
| M586 | BL | BL | BL | BL | BL |
| M587 | BL | BL | BL | BL | BL |
| M588 | BL | BL | BL | BL | d.(*1) |
| M589 | BL | BL | BL | BL | BL |
| M590 | BL | BL | BL | BL | BL |
| M591 | d.(*1) | d.(*1) | BL | BL | n.a. |
| M592 | BL | BL | BL | BL | BL |
| M593 | BL | BL | BL | BL | BL |
| M594 | BL | BL | BL | BL | BL |
| M595 | BL | BL | BL | BL | BL |
| M596 | BL | BL | BL | BL | BL |

Test Report No.: 178167624a 001 Page 38 of 77

| | | | | | |
|------|----|----|----|----|--------|
| M597 | BL | BL | BL | BL | BL |
| M598 | BL | BL | BL | BL | BL |
| M599 | BL | BL | BL | BL | d.(*1) |
| M600 | BL | BL | BL | BL | BL |

Abbreviation: Pb = Lead
 Cd = Cadmium
 Hg = Mercury
 Cr = Chromium
 Br = Bromine
 n.a. = Not applicable
 BL = Below limit
 OL = Over limit
 d. = Detected

Remark:

- (*1) The screening result was detected in the inconclusive region or above the screening limits, thus the further wet chemistry tests are suggested.
- (*2) Component(s)/ materials(s) with an area of less than 2mm x2 mm will not be selected for testing due to technical reason.
 For the test sample does not have detail materials information provided by client, visually identical materials (e.g. wire insulation, solder points, etc.) will be considered as the same material. Solder points on a printing circuit board will be examined several times based on optical anomalies or discoloration of the solder point(s) unless the solder point(s) is obviously generated automatically during production.
 All other materials will be sampled and tested at one test point representatively.
- (*3) The Chromium (Cr) and Bromine (Br) in the above result table indicate the total chromium and total bromine by means of XRF screening. PBBs, or PBDEs content shall be further confirmed with reference to IEC 62321-6:2015. Chromium (VI) shall be further confirmed with reference to IEC 62321-7-1:2015, IEC 62321-7-2:2017 or EN ISO 17075-1:2017.

XRF Screening limits for different matrices :

| Material | Concentration (%) | | | | |
|----------------------------|-------------------------|------------|-------------------------|-------------------------|------------|
| | Cd | Cr | Pb | Hg | Br |
| Polymeric | BL≤0.006<X<0.014≤ OL | BL≤0.064<X | BL≤0.067<X<0.133≤ OL | BL≤0.066<X< 0.134≤OL | BL≤0.029<X |
| Metallic | BL≤0.006<X<0.014≤ OL | BL≤0.064<X | BL≤0.067<X<0.133≤ OL | BL≤0.066<X< 0.134≤OL | n.a. |
| Composite materials | BL≤0.004<X<0.016≤ OL | BL≤0.044<X | BL≤0.047<X<0.153≤ OL | BL≤0.046<X< 0.154≤OL | BL≤0.024<X |

Remark: The symbol "X" marks the region where further investigation is necessary.

2.(HM) Cadmium, Lead, Chromium (VI), Mercury, Polybrominated biphenyls (PBB) and Polybrominated diphenyl ethers (PBDE)

Test Method: Total Cadmium, Lead, Mercury, Chromium
 - Ref. to IEC 62321-4:2013+AMD1:2017 and IEC 62321-5:2013

Chromium (VI)
 - For Metal material - Ref. to IEC 62321-7-1:2015
 - For Plastic or Electronic material - Ref. to IEC 62321-7-2:2017
 - For Leather material - Ref. to EN ISO 17075-1:2017

PBBs, PBDEs - Ref. to IEC 62321-6:2015

Test Result:

| | Cd | Cr(VI) | Pb | Hg | PBBs (*) | PBDEs (*) |
|--------------------------------------|-----------|---------------|-----------|-----------|-----------------|------------------|
| Maximum Permissible Limit (%) | 0.01 | 0.1 | 0.1 | 0.1 | 0.1 | 0.1 |

| Material No. | (%) | | | | | |
|---------------------|---------------|------------------------|--------------|--------------|-----------------|------------------|
| | Cd | Cr^{VI} | Pb | Hg | PBBs (*) | PBDEs (*) |
| | RL (%) | | | | | |
| | 0.001 | 0.001 | 0.001 | 0.001 | 0.01 | 0.01 |
| M012 | n.a. | n.a. | n.a. | n.a. | < RL | < RL |
| M022 | n.a. | n.a. | n.a. | n.a. | < RL | < RL |
| M024 | n.a. | n.a. | n.a. | n.a. | < RL | < RL |
| M043 | n.a. | n.a. | 2.536(*4) | n.a. | n.a. | n.a. |
| M053 | n.a. | n.a. | n.a. | n.a. | < RL | < RL |
| M062 | n.a. | n.a. | n.a. | n.a. | < RL | < RL |
| M063 | n.a. | n.a. | n.a. | n.a. | < RL | < RL |
| M064 | n.a. | n.a. | n.a. | n.a. | < RL | < RL |
| M067 | n.a. | n.a. | n.a. | < RL | n.a. | n.a. |
| M068 | n.a. | n.a. | n.a. | n.a. | < RL | < RL |
| M069 | n.a. | n.a. | n.a. | n.a. | < RL | < RL |
| M070 | n.a. | n.a. | n.a. | n.a. | < RL | < RL |
| M078 | n.a. | n.a. | n.a. | < RL | < RL | < RL |
| M080 | n.a. | n.a. | n.a. | n.a. | < RL | < RL |
| M081 | n.a. | n.a. | n.a. | < RL | n.a. | n.a. |
| M082 | n.a. | n.a. | n.a. | n.a. | < RL | < RL |
| M087 | n.a. | n.a. | n.a. | n.a. | < RL | < RL |
| M089 | n.a. | n.a. | n.a. | n.a. | < RL | < RL |

Test Report No.: 178167624a 001

Page 40 of 77

| | | | | | | |
|------|------|------|-----------|------|------|------|
| M091 | n.a. | n.a. | n.a. | n.a. | < RL | < RL |
| M100 | n.a. | n.a. | n.a. | n.a. | < RL | < RL |
| M102 | n.a. | n.a. | n.a. | n.a. | < RL | < RL |
| M104 | n.a. | n.a. | n.a. | n.a. | < RL | < RL |
| M105 | n.a. | n.a. | 0.235(*4) | n.a. | n.a. | n.a. |
| M106 | n.a. | n.a. | 1.060(*5) | n.a. | n.a. | n.a. |
| M132 | n.a. | n.a. | n.a. | n.a. | < RL | < RL |
| M135 | n.a. | n.a. | n.a. | n.a. | < RL | < RL |
| M137 | n.a. | n.a. | n.a. | n.a. | < RL | < RL |
| M139 | n.a. | n.a. | n.a. | n.a. | < RL | < RL |
| M140 | n.a. | n.a. | 0.191(*5) | n.a. | n.a. | n.a. |
| M141 | < RL | n.a. | 0.382(*4) | n.a. | n.a. | n.a. |
| M142 | n.a. | n.a. | (*6) | n.a. | < RL | < RL |
| M143 | n.a. | n.a. | 1.181(*4) | n.a. | n.a. | n.a. |
| M145 | n.a. | n.a. | n.a. | < RL | < RL | < RL |
| M157 | n.a. | n.a. | n.a. | n.a. | < RL | < RL |
| M159 | n.a. | n.a. | 1.511(*4) | n.a. | n.a. | n.a. |
| M226 | n.a. | n.a. | n.a. | n.a. | < RL | < RL |
| M249 | n.a. | n.a. | n.a. | n.a. | < RL | < RL |
| M251 | n.a. | n.a. | n.a. | n.a. | < RL | < RL |
| M253 | n.a. | n.a. | n.a. | n.a. | < RL | < RL |
| M260 | n.a. | n.a. | n.a. | n.a. | < RL | < RL |
| M267 | < RL | n.a. | n.a. | n.a. | < RL | < RL |
| M270 | n.a. | n.a. | n.a. | n.a. | < RL | < RL |
| M272 | n.a. | n.a. | 1.165(*4) | n.a. | n.a. | n.a. |
| M273 | n.a. | n.a. | 1.427(*4) | n.a. | n.a. | n.a. |
| M277 | n.a. | n.a. | 2.709(*4) | n.a. | n.a. | n.a. |
| M284 | n.a. | n.a. | 0.051 | n.a. | n.a. | n.a. |
| M291 | n.a. | n.a. | n.a. | n.a. | < RL | < RL |
| M297 | < RL | n.a. | n.a. | n.a. | < RL | < RL |
| M311 | n.a. | n.a. | n.a. | n.a. | < RL | < RL |
| M327 | n.a. | n.a. | n.a. | n.a. | < RL | < RL |
| M341 | n.a. | n.a. | n.a. | n.a. | < RL | < RL |
| M374 | n.a. | n.a. | n.a. | n.a. | < RL | < RL |
| M380 | < RL | n.a. | n.a. | n.a. | n.a. | n.a. |
| M388 | n.a. | n.a. | 0.040 | n.a. | n.a. | n.a. |

Test Report No.: 178167624a 001

Page 41 of 77

| | | | | | | |
|------|------|------|-----------|------|------|------|
| M393 | < RL | n.a. | n.a. | n.a. | n.a. | n.a. |
| M394 | n.a. | n.a. | 0.003 | n.a. | n.a. | n.a. |
| M398 | < RL | n.a. | 0.083 | n.a. | n.a. | n.a. |
| M405 | n.a. | n.a. | n.a. | n.a. | < RL | < RL |
| M407 | n.a. | n.a. | 0.003 | < RL | n.a. | n.a. |
| M408 | < RL | n.a. | < RL | < RL | n.a. | n.a. |
| M409 | n.a. | n.a. | n.a. | n.a. | < RL | < RL |
| M410 | < RL | n.a. | n.a. | n.a. | n.a. | n.a. |
| M412 | < RL | n.a. | < RL | < RL | n.a. | n.a. |
| M428 | n.a. | n.a. | n.a. | n.a. | < RL | < RL |
| M430 | n.a. | n.a. | n.a. | n.a. | < RL | < RL |
| M435 | n.a. | n.a. | n.a. | n.a. | < RL | < RL |
| M437 | < RL | n.a. | n.a. | n.a. | n.a. | n.a. |
| M438 | < RL | n.a. | n.a. | n.a. | n.a. | n.a. |
| M450 | < RL | n.a. | 0.003 | < RL | n.a. | n.a. |
| M451 | < RL | n.a. | n.a. | n.a. | n.a. | n.a. |
| M455 | < RL | n.a. | n.a. | n.a. | < RL | < RL |
| M465 | < RL | n.a. | n.a. | n.a. | n.a. | n.a. |
| M466 | < RL | n.a. | n.a. | n.a. | n.a. | n.a. |
| M470 | < RL | n.a. | 1.016(*5) | n.a. | n.a. | n.a. |
| M472 | n.a. | n.a. | < RL | < RL | n.a. | n.a. |
| M474 | < RL | n.a. | n.a. | n.a. | n.a. | n.a. |
| M475 | n.a. | n.a. | n.a. | n.a. | < RL | < RL |
| M476 | < RL | n.a. | < RL | < RL | n.a. | n.a. |
| M478 | < RL | n.a. | 1.131(*5) | < RL | n.a. | n.a. |
| M480 | n.a. | n.a. | n.a. | n.a. | < RL | < RL |
| M491 | < RL | n.a. | n.a. | n.a. | n.a. | n.a. |
| M497 | n.a. | n.a. | n.a. | n.a. | < RL | < RL |
| M503 | n.a. | n.a. | 0.056 | n.a. | n.a. | n.a. |
| M505 | < RL | n.a. | n.a. | n.a. | n.a. | n.a. |
| M509 | n.a. | n.a. | n.a. | n.a. | < RL | < RL |
| M510 | < RL | n.a. | n.a. | n.a. | n.a. | n.a. |
| M511 | n.a. | n.a. | 0.003 | n.a. | n.a. | n.a. |
| M515 | < RL | n.a. | 0.041 | < RL | n.a. | n.a. |
| M521 | < RL | n.a. | n.a. | n.a. | n.a. | n.a. |
| M527 | < RL | n.a. | n.a. | n.a. | n.a. | n.a. |

| | | | | | | |
|------|------|-------|-------|------|------|------|
| M535 | n.a. | n.a. | n.a. | n.a. | < RL | < RL |
| M542 | n.a. | n.a. | n.a. | n.a. | < RL | < RL |
| M543 | n.a. | n.a. | n.a. | n.a. | < RL | < RL |
| M549 | n.a. | n.a. | n.a. | n.a. | < RL | < RL |
| M550 | n.a. | n.a. | n.a. | n.a. | < RL | < RL |
| M551 | n.a. | n.a. | n.a. | n.a. | < RL | < RL |
| M552 | n.a. | n.a. | 0.002 | n.a. | n.a. | n.a. |
| M553 | n.a. | n.a. | n.a. | n.a. | < RL | < RL |
| M567 | < RL | n.a. | n.a. | n.a. | n.a. | n.a. |
| M573 | n.a. | n.a. | < RL | < RL | n.a. | n.a. |
| M574 | < RL | n.a. | 0.002 | < RL | n.a. | n.a. |
| M575 | n.a. | n.a. | n.a. | < RL | n.a. | n.a. |
| M576 | n.a. | n.a. | n.a. | n.a. | < RL | < RL |
| M581 | < RL | n.a. | n.a. | n.a. | n.a. | n.a. |
| M588 | n.a. | n.a. | n.a. | n.a. | < RL | < RL |
| M591 | < RL | n.a. | n.a. | n.a. | n.a. | n.a. |
| M599 | n.a. | n.a. | n.a. | n.a. | < RL | < RL |
| M601 | < RL | 0.005 | < RL | < RL | < RL | < RL |

| Material No. | Hexavalent Chromium Content ($\mu\text{g}/\text{cm}^2$) (*1) RL: 0.10 $\mu\text{g}/\text{cm}^2$ |
|--------------|---|
| M034 | Negative |
| M039 | Negative |
| M040 | Negative |
| M042 | Negative |
| M060 | Negative |
| M068 | Negative |
| M124 | Negative |
| M125 | Negative |
| M128 | Negative |
| M165 | Negative |
| M166 | Negative |
| M167 | Negative |
| M168 | Negative |
| M170 | Negative |
| M173 | Negative |
| M198 | Negative |
| M199 | Negative |

Test Report No.: 178167624a 001

Page 43 of 77

| | |
|------|----------|
| M200 | Negative |
| M201 | Negative |
| M205 | Negative |
| M210 | Negative |
| M211 | Negative |
| M212 | Negative |
| M215 | Negative |
| M216 | Negative |
| M221 | Negative |
| M222 | Negative |
| M224 | Negative |
| M225 | Negative |
| M227 | Negative |
| M229 | Negative |
| M233 | Negative |
| M238 | Negative |
| M239 | Negative |
| M265 | Negative |
| M269 | Negative |
| M271 | Negative |
| M283 | Negative |
| M284 | Negative |
| M285 | Negative |
| M299 | Negative |
| M320 | Negative |
| M328 | Negative |
| M333 | Negative |
| M339 | Negative |
| M340 | Negative |
| M343 | Negative |
| M344 | Negative |
| M356 | Negative |
| M380 | Negative |
| M381 | Negative |
| M418 | Negative |
| M419 | Negative |
| M420 | Negative |
| M436 | Negative |
| M437 | Negative |
| M438 | Negative |
| M439 | Negative |

Test Report No.: 178167624a 001 Page 44 of 77

| | |
|------|----------|
| M443 | Negative |
| M449 | Negative |
| M461 | Negative |
| M462 | Negative |
| M464 | Negative |
| M465 | Negative |
| M466 | Negative |
| M473 | Negative |
| M491 | Negative |
| M500 | Negative |
| M503 | Negative |
| M510 | Negative |
| M511 | Negative |
| M512 | Negative |
| M515 | Negative |
| M519 | Negative |
| M520 | Negative |
| M522 | Negative |
| M529 | Negative |
| M531 | Negative |
| M561 | Negative |
| M562 | Negative |
| M564 | Negative |
| M572 | Negative |
| M581 | Negative |
| M591 | Negative |

| Material No. | Hexavalent Chromium Content (%) (*2) RL: 0.01% |
|--------------|---|
| M398 | < RL |
| M474 | < RL |
| M477 | < RL |
| M502 | < RL |
| M536 | < RL |

Test Report No.: 178167624a 001

Page 45 of 77

| | | | |
|----------------------|---------|---|---|
| Abbreviation: | Pb | = | Lead |
| | Cd | = | Cadmium |
| | Hg | = | Mercury |
| | Cr | = | Chromium |
| | Cr (VI) | = | Chromium (VI) |
| | PBBs | = | Total Polybrominated Biphenyls |
| | PBDEs | = | Total Polybrominated Diphenyl Ethers |
| | < | = | Less than |
| | RL | = | Reporting Limit |
| | n.a. | = | Not Applicable |
| | ^ | = | The total Chromium have been determined |
| | % | = | Percentage |

Test Report No.: 178167624a 001 Page 46 of 77

Remark:

(*) The reporting limit for each individual PBBs and individual PBDEs are :

| Reporting Limit (%) | | |
|---------------------|--------------------------|------|
| PBBs | Bromobiphenyl | 0.01 |
| | Dibromobiphenyl | 0.01 |
| | Tribromobiphenyl | 0.01 |
| | Tetrabromobiphenyl | 0.01 |
| | Pentabromobiphenyl | 0.01 |
| | Hexabromobiphenyl | 0.01 |
| | Heptabromobiphenyl | 0.01 |
| | Octabromobiphenyl | 0.01 |
| | Nonabromobiphenyl | 0.01 |
| | Decabromobiphenyl | 0.01 |
| PBDEs | Bromodiphenylether | 0.01 |
| | Dibromodiphenyl ether | 0.01 |
| | Tribromodiphenyl ether | 0.01 |
| | Tetrabromodiphenyl ether | 0.01 |
| | Pentabromodiphenyl ether | 0.01 |
| | Hexabromodiphenyl ether | 0.01 |
| | Heptabromodiphenyl ether | 0.01 |
| | Octabromodiphenyl ether | 0.01 |
| | Nonabromodiphenyl ether | 0.01 |
| | Decabromodiphenyl ether | 0.01 |

(*1) The total chromium content in Metal sample was found to be exceeded the maximum permissible limit (0.1%). Thus, the Chromium (VI) content in surface layer have been confirmed with reference to IEC 62321-7-1:2015 Annex.

| | Chromium (VI) concentration | Qualitative result |
|--------------|--|--|
| Negative | $<0.1\mu\text{g}/\text{cm}^2$ | The sample is negative (-ve) for Cr(VI). The Cr(VI) concentration is below the limit of quantification. The coating is considered a non-Cr(VI) based coating |
| Inconclusive | $\geq 0.1\mu\text{g}/\text{cm}^2$ and $\leq 0.13\mu\text{g}/\text{cm}^2$ | The result is considered to be inconclusive. Unavoidable coating variations may influence the determination. Recommendation: if additional samples are available, perform a total of 3 trials to increase sampling surface area. Use the averaged result of the 3 trails for the final determination. |
| Positive | $>0.13\mu\text{g}/\text{cm}^2$ | The sample is positive (+ve) for Cr(VI). Concentration is above the limit of quantification and the statistical margin of error. The sample coating is considered to contain Cr(VI). |

(*2) The total chromium content in plastic sample or electronic sample was found to be exceeded the maximum permissible limit (0.1%). Thus, the Chromium (VI) content have been confirmed with reference to IEC 62321-7-2:2017

(*3) The plating / coating of all the metal sample(s) is not confirmed, it cannot be further mechanically disjointed into different materials.

Test Report No.: 178167624a 001

Page 47 of 77

- (*4) According to the declaration from the client, Lead(Pb) in M043, M105, M141, M143, M159, M272, M273 and M277 are exempted by EU RoHS directive 2011/65/EU based on ANNEX III 6(c) : Copper alloy containing up to 4 % lead by weight.
- (*5) According to the declaration from the client, Lead (Pb) in M106, M140, M470 and M478 are exempted by EU RoHS directive 2011/65/EU based on ANNEX III 7(c)-I : Electrical and electronic components containing lead in a glass or ceramic other than dielectric ceramic in capacitors, e.g. piezoelectronic devices, or in a glass or ceramic matrix compound.
- (*6) According to the declaration from the client, Lead (Pb) in M142 is exempted by EU RoHS directive 2011/65/EU based on ANNEX III 7(a): Lead in high melting temperature type solders (i.e. lead based alloys containing 85 % by weight or more lead).

Test Report No.: 178167624a 001

Page 48 of 77

3. BBP, DBP, DEHP, DIBP content

Test Method: IEC 62321-8:2017

Test Result:

| | BBP | DBP | DEHP | DIBP |
|--------------------------------------|------------|------------|-------------|-------------|
| Maximum permissible Limit (%) | 0.1 | 0.1 | 0.1 | 0.1 |

| Test No. | Material No. | (%) | | | |
|-----------------|---------------------|---------------|--------------|--------------|--------------|
| | | BBP | DBP | DEHP | DIBP |
| | | RL (%) | | | |
| | | 0.005 | 0.005 | 0.005 | 0.005 |
| T001 | M001 + M002 | < RL | < RL | < RL | < RL |
| T002 | M004 + M005 + M007 | < RL | < RL | < RL | < RL |
| T003 | M008 + M009 + M010 | < RL | < RL | < RL | < RL |
| T004 | M011 | < RL | < RL | < RL | < RL |
| T005 | M012 | < RL | < RL | < RL | < RL |
| T006 | M013 | < RL | < RL | < RL | < RL |
| T007 | M014 + M015 + M016 | < RL | < RL | < RL | < RL |
| T008 | M017 + M027 + M044 | < RL | < RL | < RL | < RL |
| T009 | M019 + M021 + M022 | < RL | < RL | < RL | < RL |
| T010 | M024 + M025 + M028 | < RL | < RL | < RL | < RL |
| T011 | M029 + M030 + M031 | < RL | < RL | < RL | < RL |
| T012 | M038 + M052 + M053 | < RL | < RL | < RL | < RL |
| T013 | M045 + M046 + M047 | < RL | < RL | < RL | < RL |
| T014 | M048 + M049 | < RL | < RL | < RL | < RL |
| T015 | M051 + M123 | < RL | < RL | < RL | < RL |
| T016 | M055 + M056 + M059 | < RL | < RL | < RL | < RL |
| T017 | M057 + M058 | < RL | < RL | < RL | < RL |
| T018 | M061 | < RL | < RL | < RL | < RL |
| T019 | M063 + M064 + M078 | < RL | < RL | < RL | < RL |
| T020 | M069 | < RL | < RL | < RL | < RL |
| T021 | M070 + M087 + M088 | < RL | < RL | < RL | < RL |
| T022 | M072 + M073 + M074 | < RL | < RL | < RL | < RL |

Test Report No.: 178167624a 001

Page 49 of 77

| | | | | | |
|------|--------------------|------|------|-------|------|
| T023 | M075 + M076 + M083 | < RL | < RL | < RL | < RL |
| T024 | M077 | < RL | < RL | < RL | < RL |
| T025 | M082 | < RL | < RL | < RL | < RL |
| T026 | M084 | < RL | < RL | < RL | < RL |
| T027 | M085 + M090 + M095 | < RL | < RL | < RL | < RL |
| T028 | M089 + M091 + M054 | < RL | < RL | < RL | < RL |
| T029 | M092 + M102 + M116 | < RL | < RL | < RL | < RL |
| T030 | M096 + M097 + M098 | < RL | < RL | < RL | < RL |
| T031 | M099 + M101 + M108 | < RL | < RL | < RL | < RL |
| T032 | M100 + M103 + M104 | < RL | < RL | < RL | < RL |
| T033 | M109 + M110 + M111 | < RL | < RL | < RL | < RL |
| T034 | M112 | < RL | < RL | < RL | < RL |
| T035 | M113 + M114 + M119 | < RL | < RL | < RL | < RL |
| T036 | M115 | < RL | < RL | 0.038 | < RL |
| T037 | M118 + M132 + M135 | < RL | < RL | < RL | < RL |
| T038 | M120 + M121 + M122 | < RL | < RL | < RL | < RL |
| T039 | M126 + M127 + M129 | < RL | < RL | < RL | < RL |
| T040 | M133 + M134 | < RL | < RL | < RL | < RL |
| T041 | M137 | < RL | < RL | < RL | < RL |
| T042 | M144 | < RL | < RL | < RL | < RL |
| T043 | M145 + M186 | < RL | < RL | < RL | < RL |
| T044 | M147 + M148 + M150 | < RL | < RL | < RL | < RL |
| T045 | M149 | < RL | < RL | < RL | < RL |
| T046 | M151 + M152 + M153 | < RL | < RL | < RL | < RL |
| T047 | M154 + M155 + M156 | < RL | < RL | < RL | < RL |
| T048 | M157 + M160 + M161 | < RL | < RL | < RL | < RL |
| T049 | M162 + M163 + M169 | < RL | < RL | < RL | < RL |
| T050 | M171 + M181 | < RL | < RL | < RL | < RL |
| T051 | M172 | < RL | < RL | < RL | < RL |
| T052 | M174 + M175 | < RL | < RL | < RL | < RL |
| T053 | M176 + M177 + M178 | < RL | < RL | < RL | < RL |

Test Report No.: 178167624a 001

Page 50 of 77

| | | | | | |
|------|--------------------|------|-------|-------|------|
| T054 | M179 | < RL | < RL | < RL | < RL |
| T055 | M180 + M187 + M188 | < RL | < RL | < RL | < RL |
| T056 | M189 | < RL | 0.082 | < RL | < RL |
| T057 | M190 | < RL | < RL | < RL | < RL |
| T058 | M191 + M192 + M193 | < RL | < RL | < RL | < RL |
| T059 | M194 | < RL | < RL | < RL | < RL |
| T060 | M196 | < RL | < RL | < RL | < RL |
| T061 | M217 + M220 + M228 | < RL | < RL | < RL | < RL |
| T062 | M219 | < RL | < RL | < RL | < RL |
| T063 | M223 | < RL | < RL | < RL | < RL |
| T064 | M226 | < RL | < RL | 0.069 | < RL |
| T065 | M230 + M231 + M232 | < RL | < RL | < RL | < RL |
| T066 | M236 + M240 | < RL | < RL | < RL | < RL |
| T067 | M243 | < RL | < RL | < RL | < RL |
| T068 | M244 | < RL | < RL | < RL | < RL |
| T069 | M247 | < RL | < RL | < RL | < RL |
| T070 | M248 | < RL | < RL | < RL | < RL |
| T071 | M249 | < RL | < RL | < RL | < RL |
| T072 | M250 | < RL | < RL | 0.024 | < RL |
| T073 | M252 + M253 + M251 | < RL | < RL | < RL | < RL |
| T074 | M254 | < RL | < RL | < RL | < RL |
| T075 | M255 + M256 + M258 | < RL | < RL | < RL | < RL |
| T076 | M257 | < RL | < RL | < RL | < RL |
| T077 | M259 + M260 | < RL | < RL | < RL | < RL |
| T078 | M266 + M267 + M270 | < RL | < RL | < RL | < RL |
| T079 | M279 + M286 + M288 | < RL | < RL | < RL | < RL |
| T080 | M289 + M290 | < RL | < RL | < RL | < RL |
| T081 | M291 + M292 + M293 | < RL | < RL | < RL | < RL |
| T082 | M294 + M295 + M296 | < RL | < RL | < RL | < RL |
| T083 | M297 + M298 | < RL | < RL | < RL | < RL |
| T084 | M300 | < RL | < RL | < RL | < RL |
| T085 | M301 + M302 + M303 | < RL | < RL | < RL | < RL |

Test Report No.: 178167624a 001 Page 51 of 77

| | | | | | |
|------|--------------------|------|-------|-------|-------|
| T086 | M304 + M306 | < RL | < RL | 0.011 | < RL |
| T087 | M308 + M309 + M310 | < RL | < RL | 0.009 | < RL |
| T088 | M311 + M312 | < RL | < RL | < RL | < RL |
| T089 | M314 + M315 + M316 | < RL | < RL | < RL | < RL |
| T090 | M324 | < RL | < RL | < RL | < RL |
| T091 | M325 | < RL | < RL | < RL | < RL |
| T092 | M327 | < RL | < RL | < RL | < RL |
| T093 | M330 + M331 + M335 | < RL | < RL | < RL | < RL |
| T094 | M336 + M337 | < RL | < RL | < RL | < RL |
| T095 | M341 | < RL | < RL | < RL | < RL |
| T096 | M345 | < RL | < RL | < RL | < RL |
| T097 | M349 | < RL | < RL | 0.085 | < RL |
| T098 | M350 | < RL | < RL | < RL | < RL |
| T099 | M354 | < RL | < RL | 0.076 | < RL |
| T100 | M355 + M422 | < RL | < RL | < RL | < RL |
| T101 | M357 + M358 + M359 | < RL | < RL | < RL | < RL |
| T102 | M360 + M361 | < RL | < RL | < RL | < RL |
| T103 | M362 + M363 | < RL | < RL | < RL | < RL |
| T104 | M364 | < RL | < RL | < RL | < RL |
| T105 | M367 + M368 + M370 | < RL | < RL | < RL | < RL |
| T106 | M374 + M375 + M377 | < RL | < RL | < RL | < RL |
| T107 | M386 + M378 + M385 | < RL | < RL | < RL | < RL |
| T108 | M389 + M390 + M391 | < RL | < RL | < RL | < RL |
| T109 | M392 + M395 | < RL | 0.011 | < RL | < RL |
| T110 | M396 + M397 + M399 | < RL | 0.009 | < RL | < RL |
| T111 | M400 + M401 + M402 | < RL | < RL | < RL | < RL |
| T112 | M403 + M404 | < RL | < RL | < RL | < RL |
| T113 | M405 + M409 + M455 | < RL | < RL | < RL | < RL |
| T114 | M407 + M408 + M411 | < RL | < RL | < RL | < RL |
| T115 | M413 | < RL | < RL | 0.089 | 0.084 |
| T116 | M414 | < RL | < RL | < RL | < RL |
| T117 | M415 | < RL | < RL | < RL | < RL |

Test Report No.: 178167624a 001

Page 52 of 77

| | | | | | |
|------|--------------------|------|------|-------|------|
| T118 | M416 | < RL | < RL | < RL | < RL |
| T119 | M423 + M448 | < RL | < RL | < RL | < RL |
| T120 | M426 | < RL | < RL | < RL | < RL |
| T121 | M427 + M428 + M429 | < RL | < RL | < RL | < RL |
| T122 | M430 + M431 + M432 | < RL | < RL | < RL | < RL |
| T123 | M433 + M434 + M435 | < RL | < RL | < RL | < RL |
| T124 | M441 + M442 | < RL | < RL | 0.009 | < RL |
| T125 | M444 + M445 + M447 | < RL | < RL | < RL | < RL |
| T126 | M452 | < RL | < RL | < RL | < RL |
| T127 | M453 + M454 | < RL | < RL | < RL | < RL |
| T128 | M458 | < RL | < RL | < RL | < RL |
| T129 | M459 | < RL | < RL | < RL | < RL |
| T130 | M460 + M463 | < RL | < RL | < RL | < RL |
| T131 | M469 + M482 + M483 | < RL | < RL | < RL | < RL |
| T132 | M475 + M479 + M480 | < RL | < RL | < RL | < RL |
| T133 | M484 + M486 + M487 | < RL | < RL | < RL | < RL |
| T134 | M488 + M489 + M490 | < RL | < RL | < RL | < RL |
| T135 | M492 + M496 + M497 | < RL | < RL | < RL | < RL |
| T136 | M493 | < RL | < RL | < RL | < RL |
| T137 | M494 + M495 + M499 | < RL | < RL | < RL | < RL |
| T138 | M498 + M501 + M502 | < RL | < RL | < RL | < RL |
| T139 | M504 + M506 + M507 | < RL | < RL | < RL | < RL |
| T140 | M509 + M543 | < RL | < RL | < RL | < RL |
| T141 | M513 | < RL | < RL | < RL | < RL |
| T142 | M517 | < RL | < RL | 0.089 | < RL |
| T143 | M518 + M523 | < RL | < RL | < RL | < RL |
| T144 | M525 | < RL | < RL | < RL | < RL |
| T145 | M530 | < RL | < RL | < RL | < RL |
| T146 | M532 + M533 + M534 | < RL | < RL | < RL | < RL |
| T147 | M535 + M536 + M537 | < RL | < RL | < RL | < RL |
| T148 | M538 + M540 + M542 | < RL | < RL | < RL | < RL |

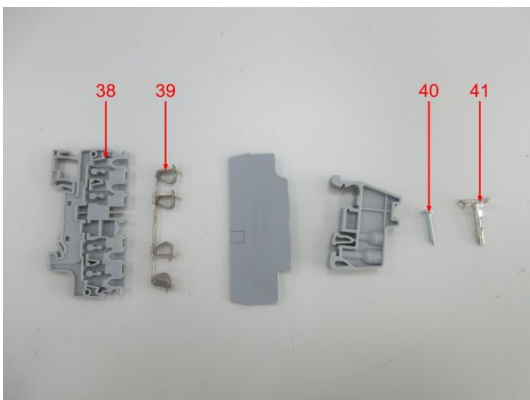
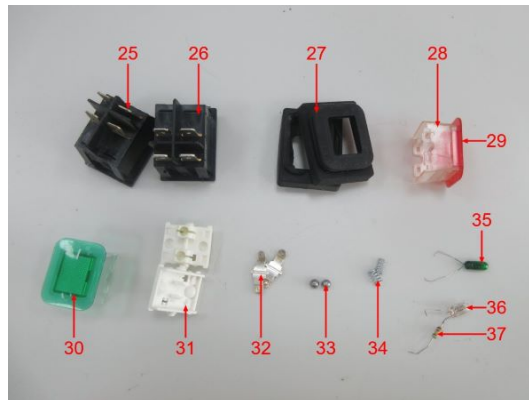
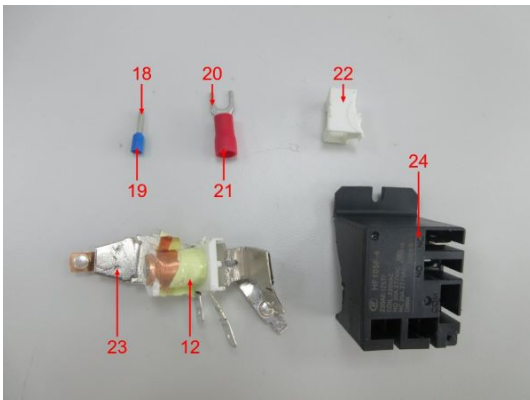
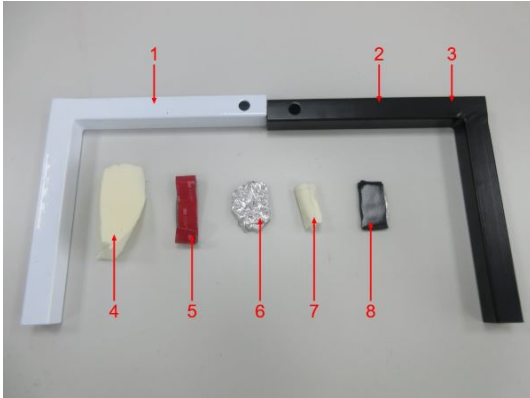
Test Report No.: 178167624a 001

Page 53 of 77

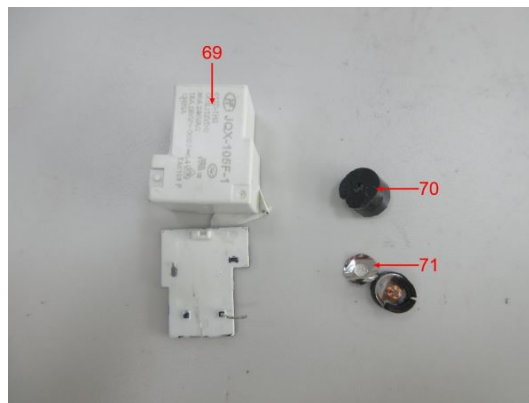
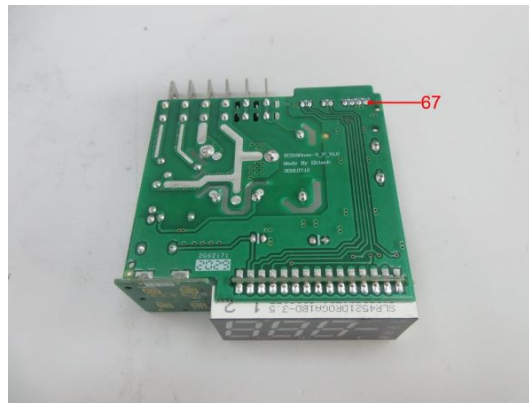
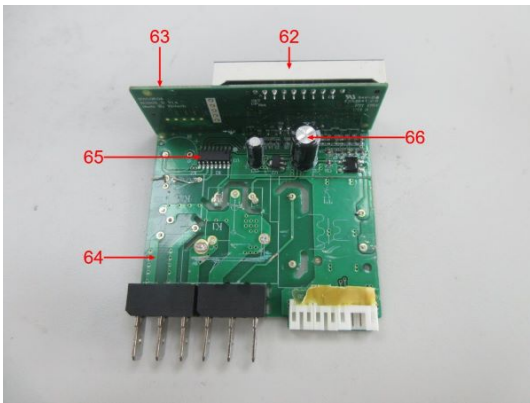
| | | | | | |
|------|-----------------------|------|------|------|------|
| T149 | M544 + M545 + M546 | < RL | < RL | < RL | < RL |
| T150 | M547 + M548 + M550 | < RL | < RL | < RL | < RL |
| T151 | M549 | < RL | < RL | < RL | < RL |
| T152 | M551 + M554 + M555 | < RL | < RL | < RL | < RL |
| T153 | M553 + M576 | < RL | < RL | < RL | < RL |
| T154 | M556 + M557 + M558 | < RL | < RL | < RL | < RL |
| T155 | M559 + M560 | < RL | < RL | < RL | < RL |
| T156 | M568 + M569 + M570 | < RL | < RL | < RL | < RL |
| T157 | M571 + M573 + M574 | < RL | < RL | < RL | < RL |
| T158 | M577 | < RL | < RL | < RL | < RL |
| T159 | M578 + M579 + M580 | < RL | < RL | < RL | < RL |
| T160 | M582 + M583 + M584 | < RL | < RL | < RL | < RL |
| T161 | M586 + M585 + M587 | < RL | < RL | < RL | < RL |
| T162 | M588 + M589 + M590 | < RL | < RL | < RL | < RL |
| T163 | M592 + M599 + M600 | < RL | < RL | < RL | < RL |
| T164 | M593 | < RL | < RL | < RL | < RL |
| T165 | M594 + M595 + M596 | < RL | < RL | < RL | < RL |
| T166 | M597 + M598 | < RL | < RL | < RL | < RL |
| T225 | M601 | < RL | < RL | < RL | < RL |

Abbreviation: BBP= Benzylbutyl phthalate
 DBP= Dibutyl phthalate
 DEHP= Bis(2-ethylhexyl) phthalate
 DIBP= Diisobutyl phthalate
 < = less than
 RL = Reporting Limit
 N.A. = Not Applicable
 %= percentage

Sample Photos

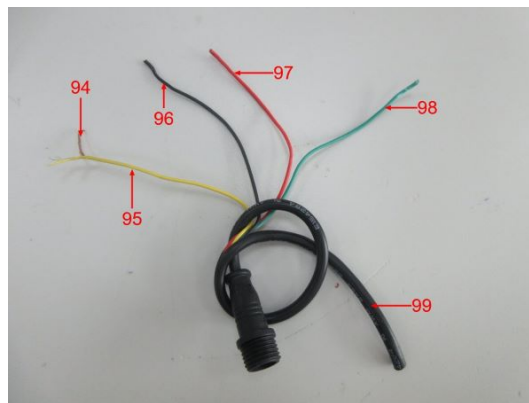
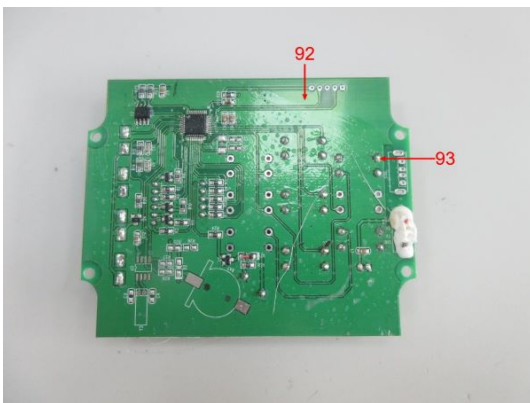
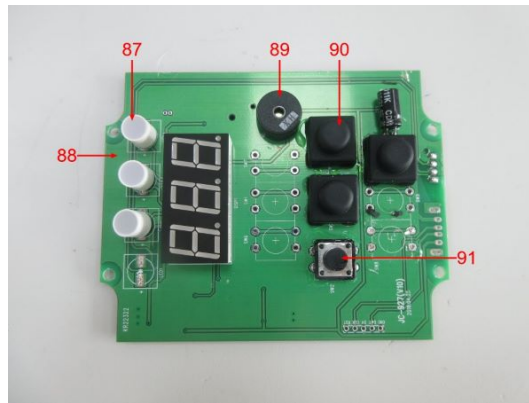
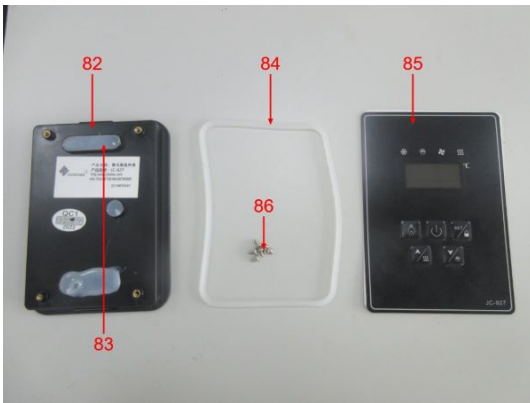
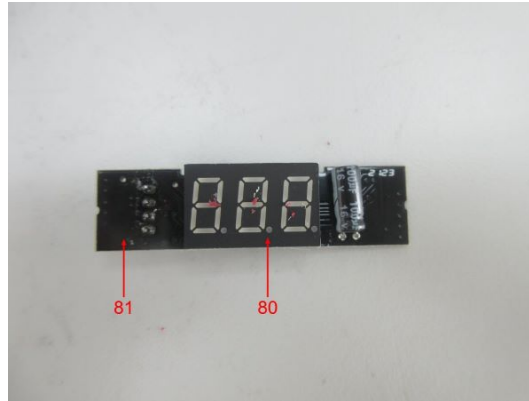
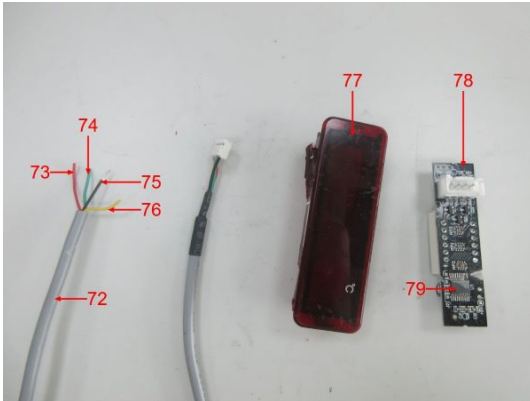


Sample Photos

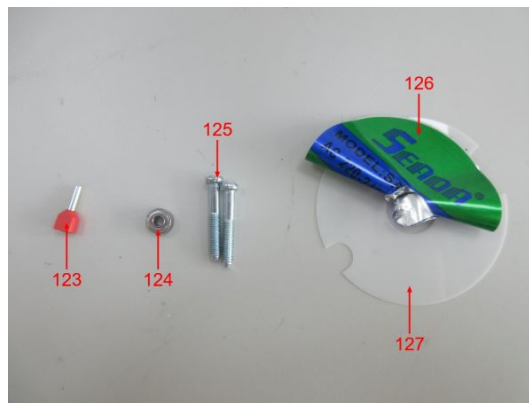
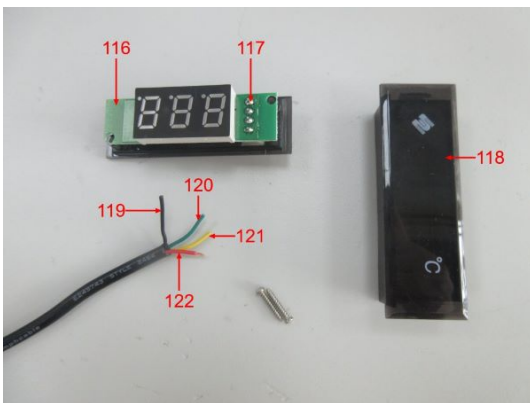
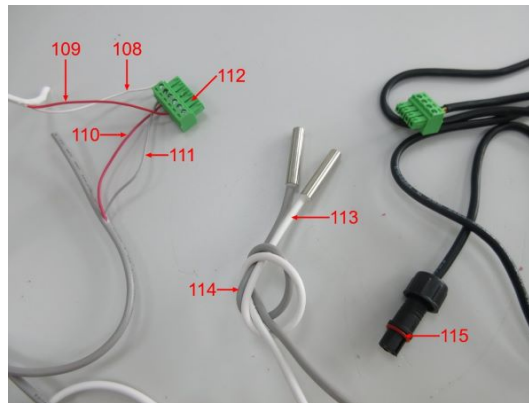
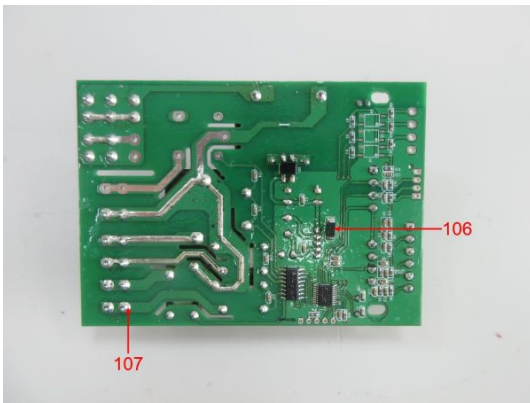
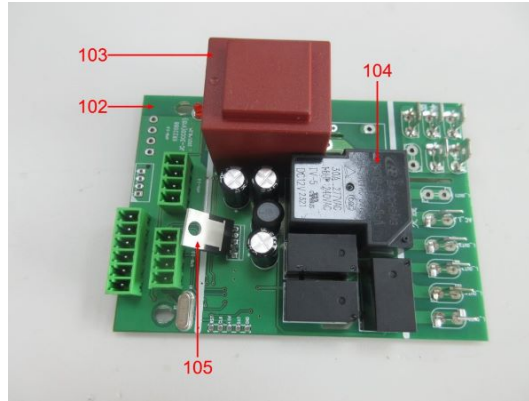
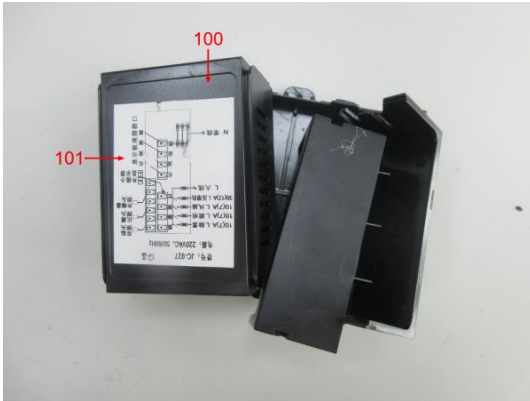


Test Report No.: 178167624a 001 Page 56 of 77

Sample Photos

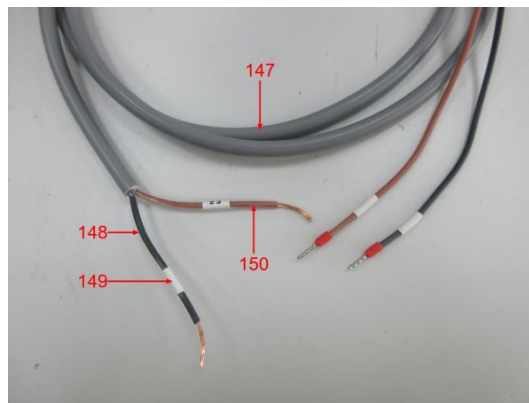
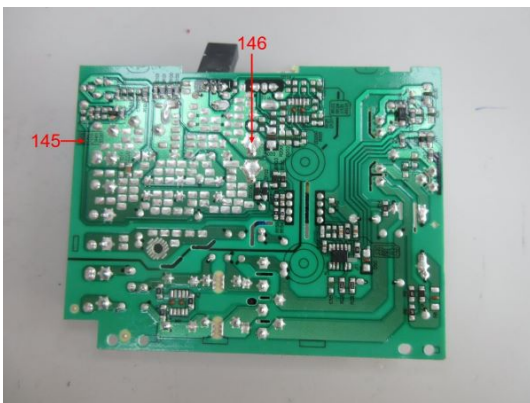
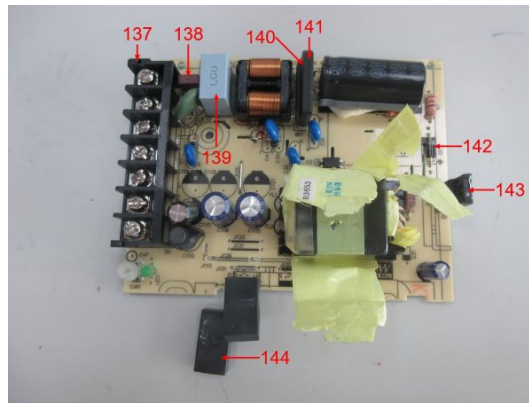
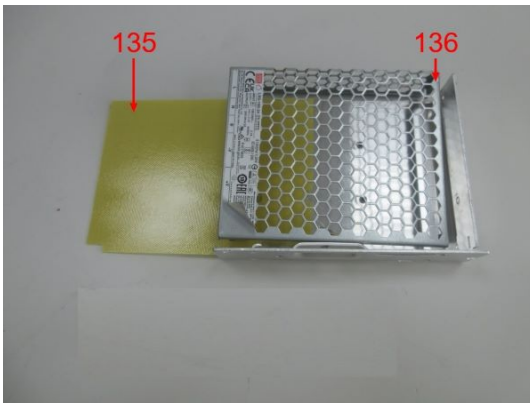
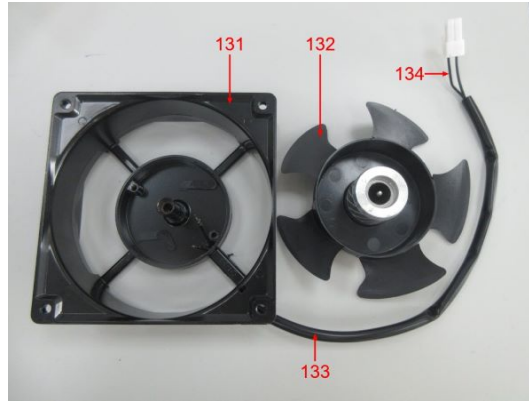
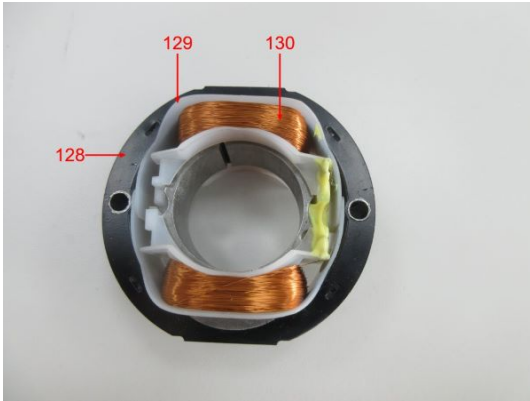


Sample Photos



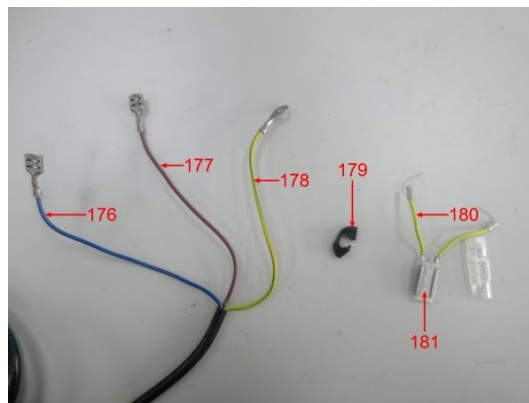
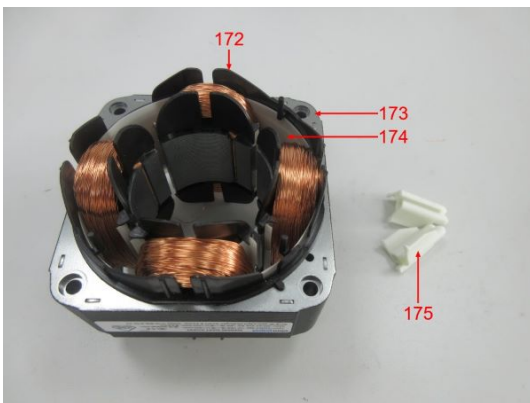
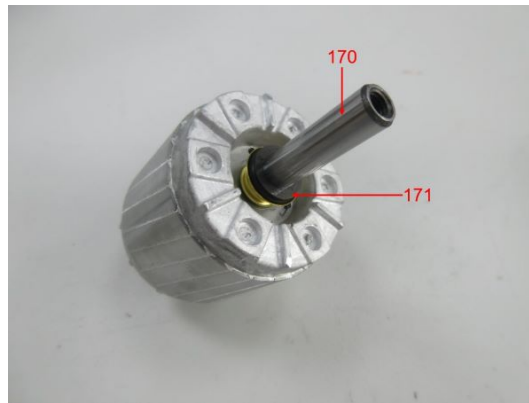
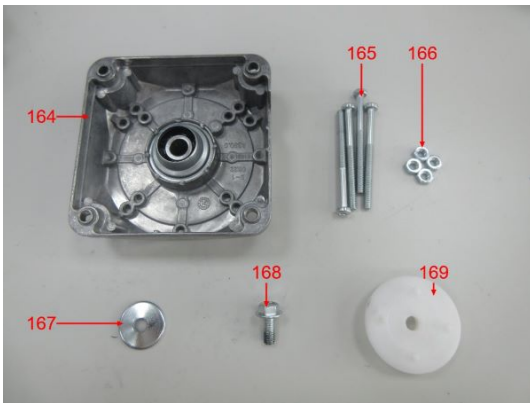
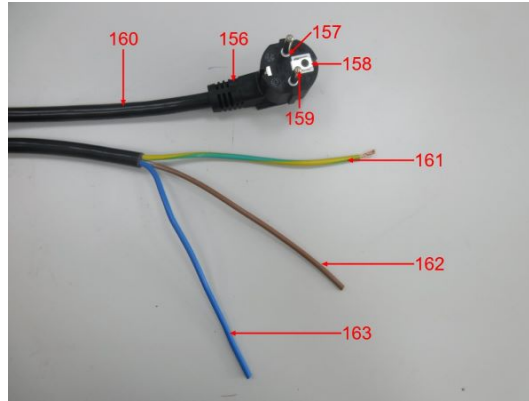
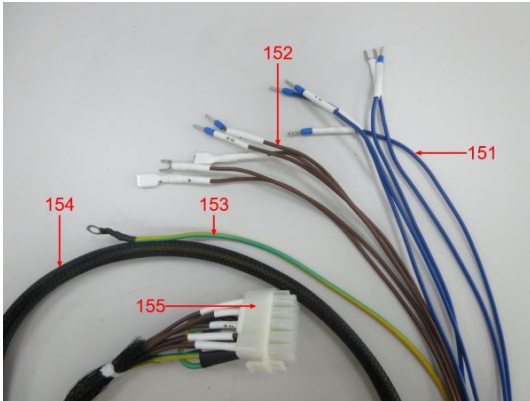
Test Report No.: 178167624a 001 Page 58 of 77

Sample Photos

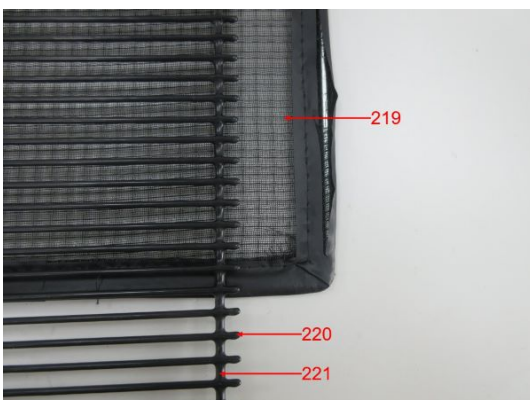
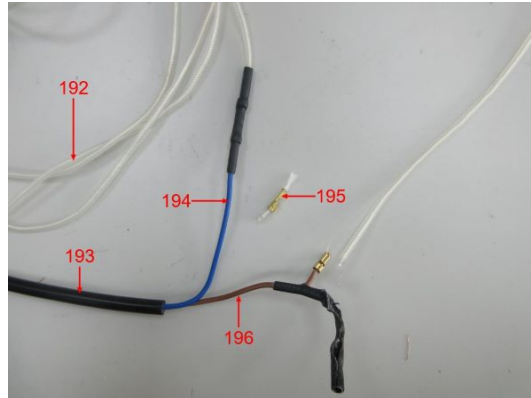
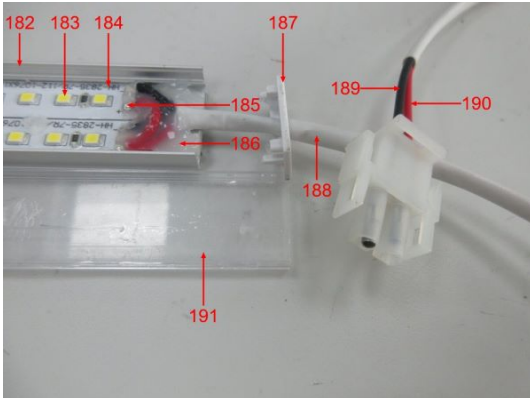


Test Report No.: 178167624a 001 Page 59 of 77

Sample Photos

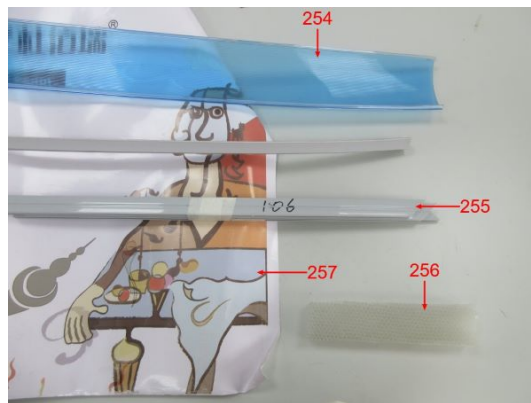
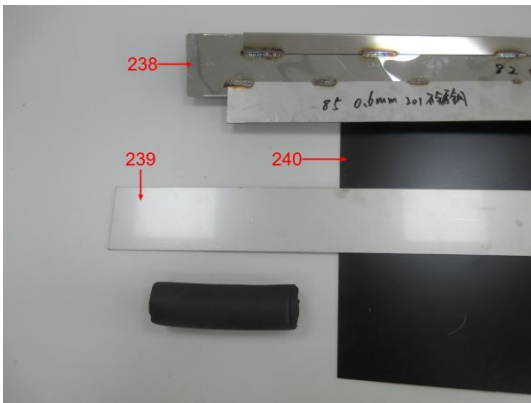


Sample Photos



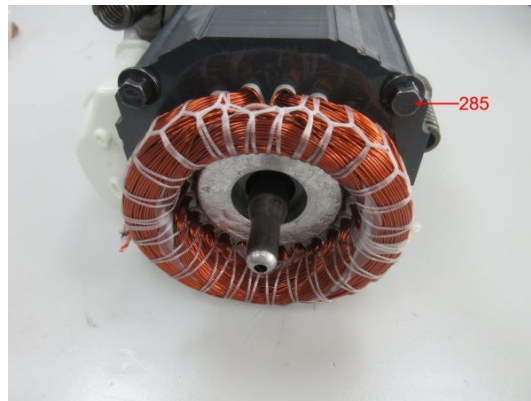
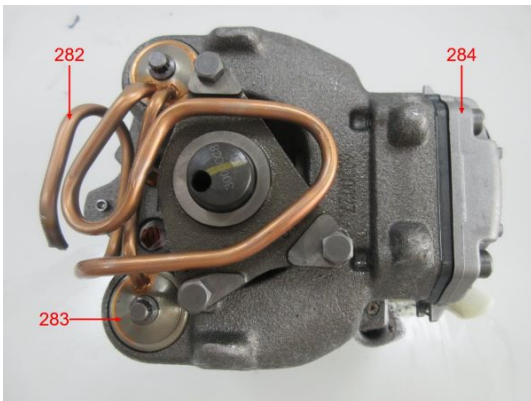
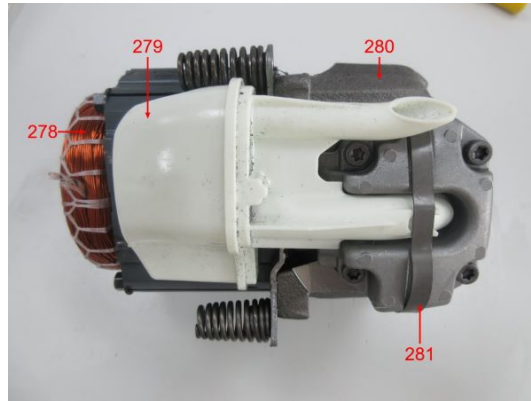
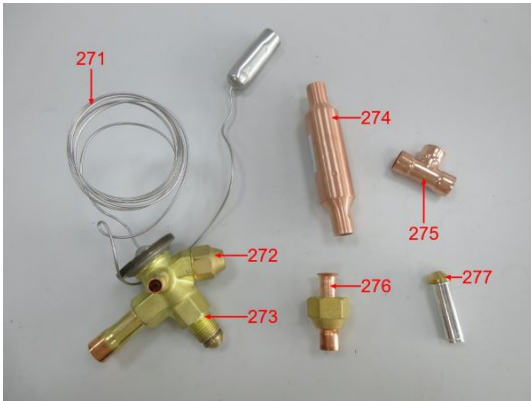
Test Report No.: 178167624a 001 Page 61 of 77

Sample Photos

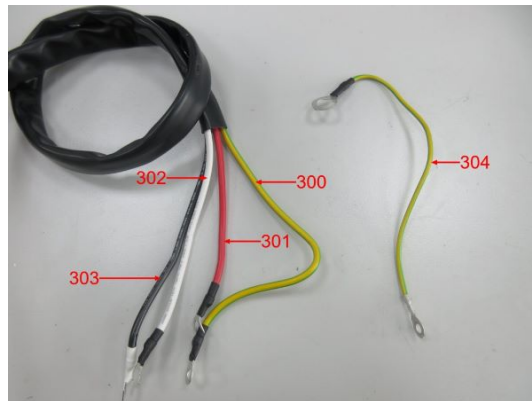
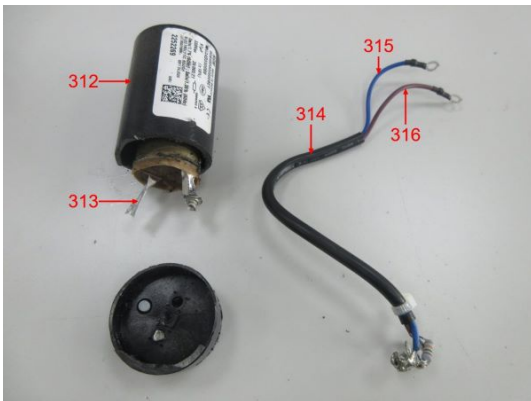
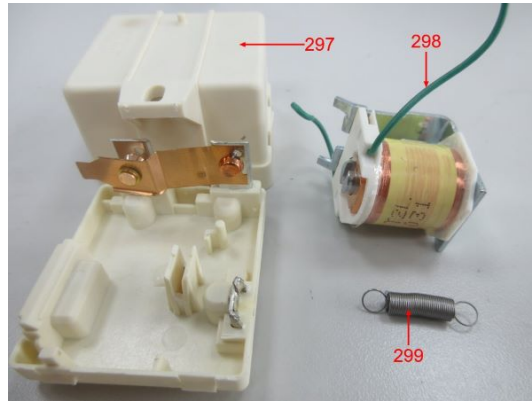
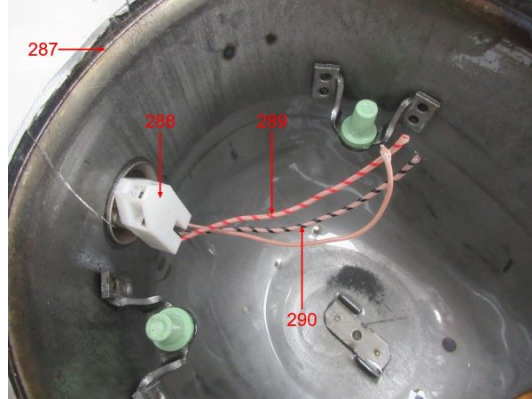


Test Report No.: 178167624a 001 Page 62 of 77

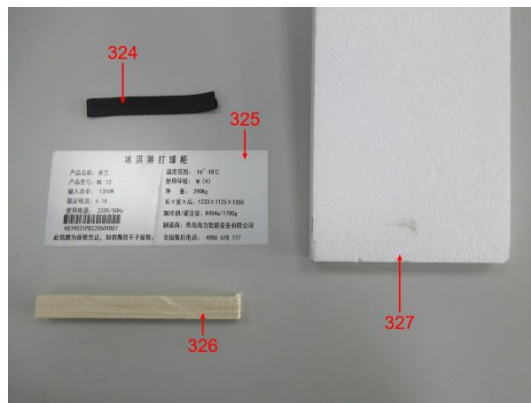
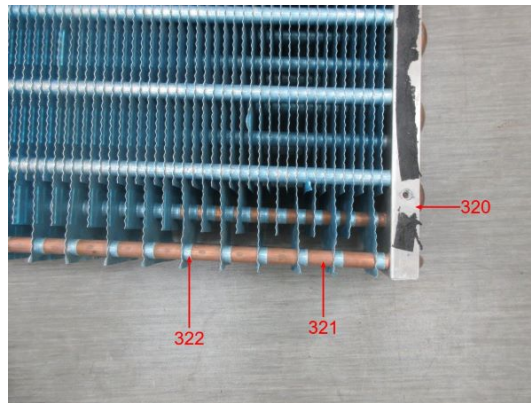
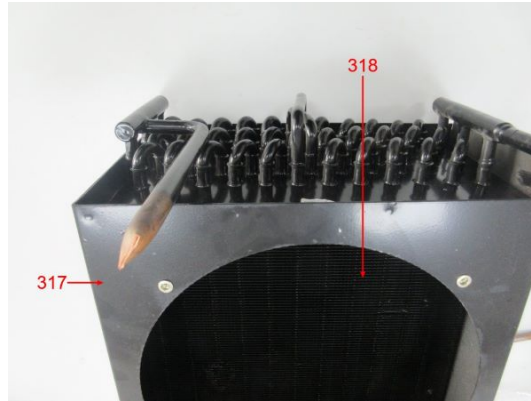
Sample Photos



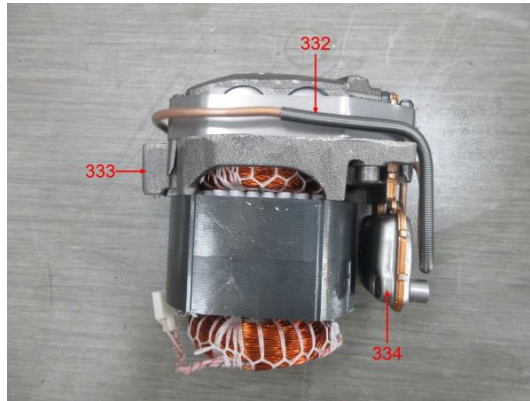
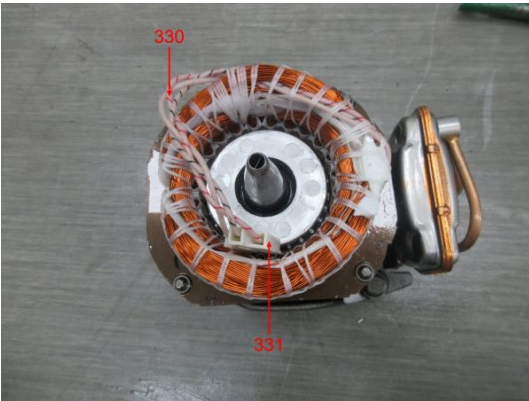
Sample Photos



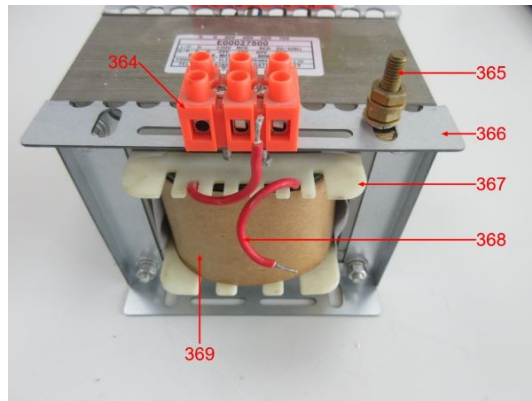
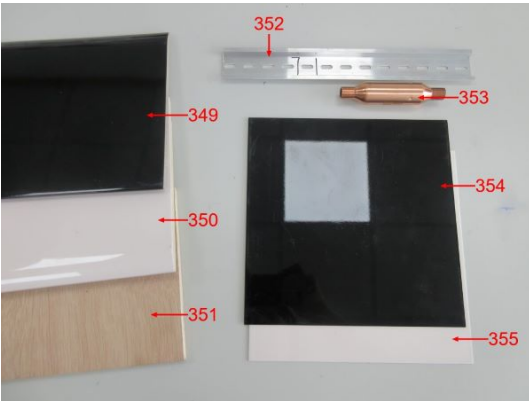
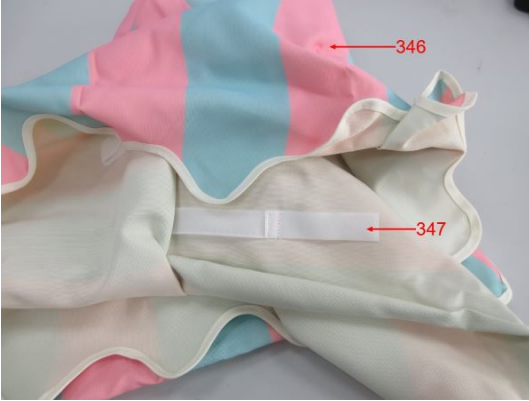
Sample Photos



Sample Photos

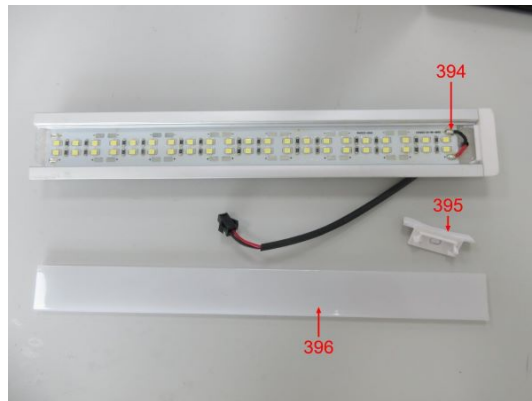
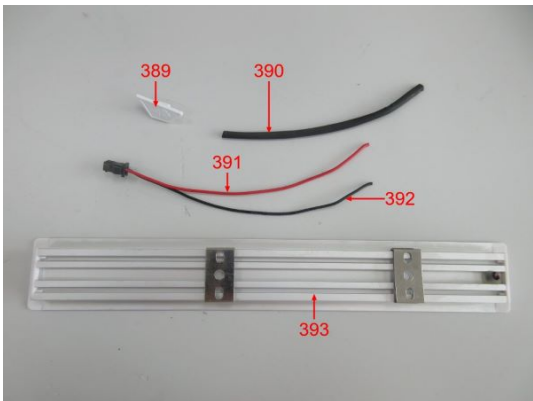
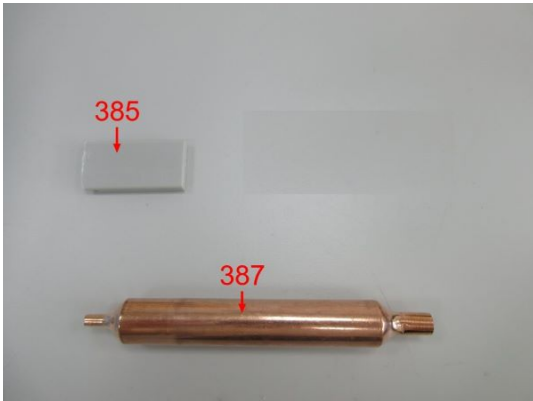
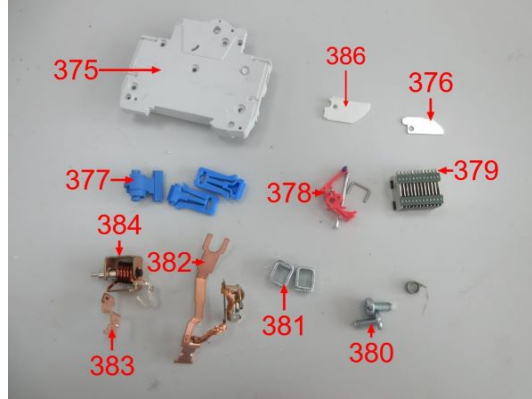


Sample Photos



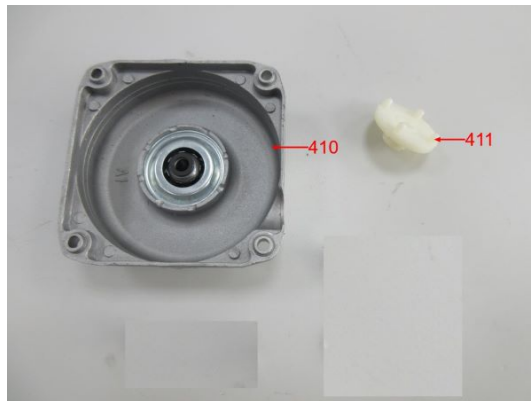
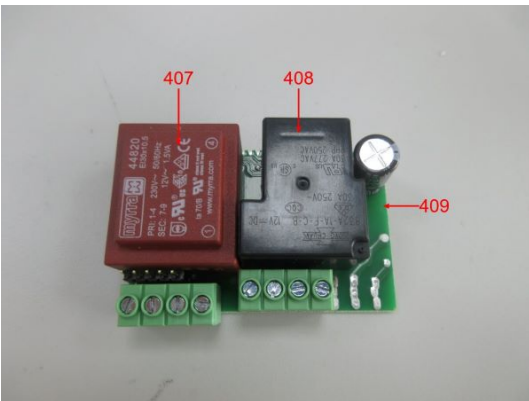
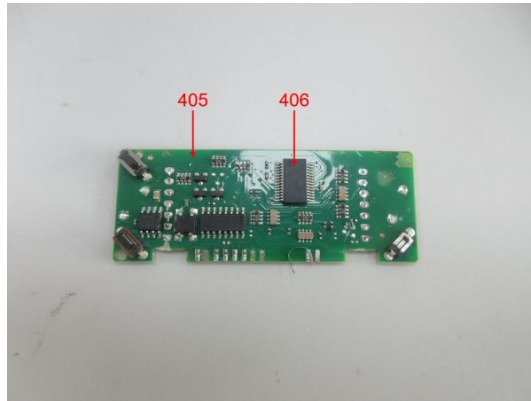
Test Report No.: 178167624a 001 Page 67 of 77

Sample Photos

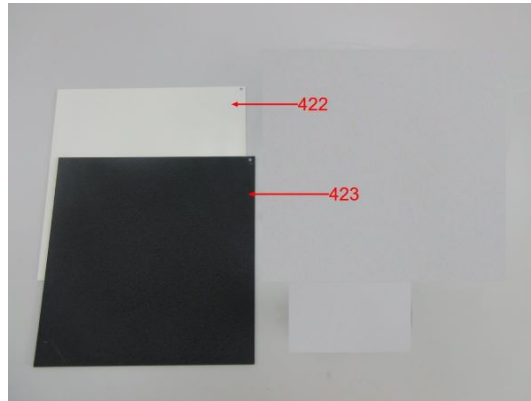
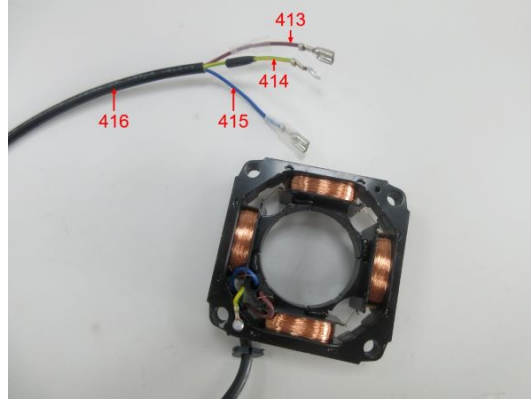


Test Report No.: 178167624a 001 Page 68 of 77

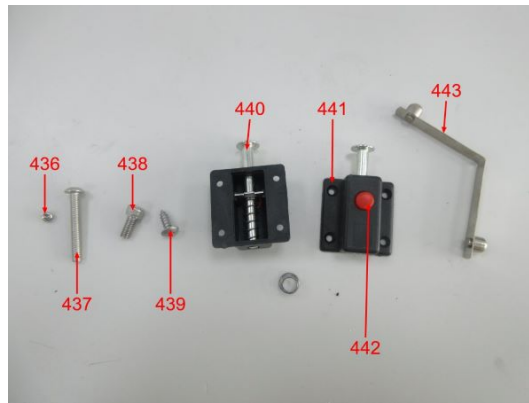
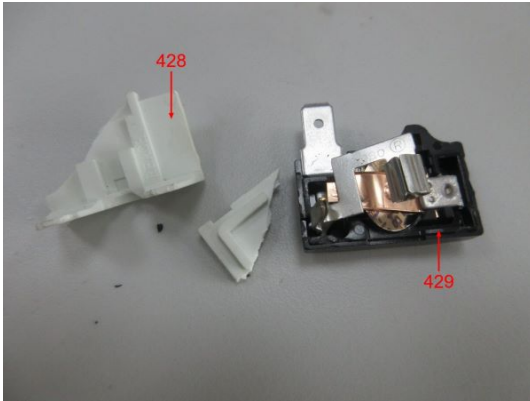
Sample Photos



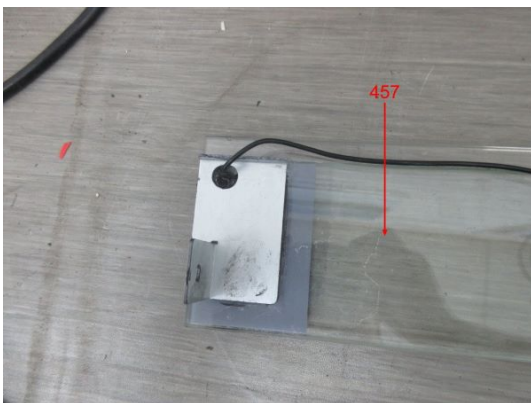
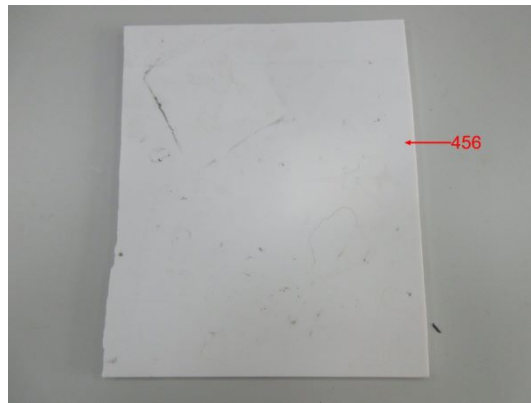
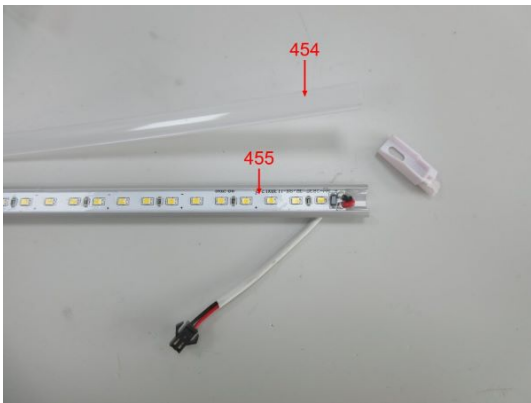
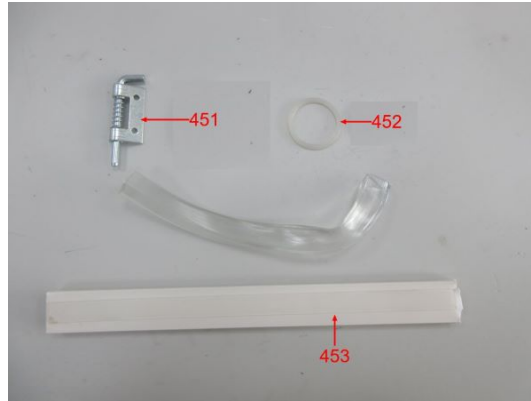
Sample Photos



Sample Photos

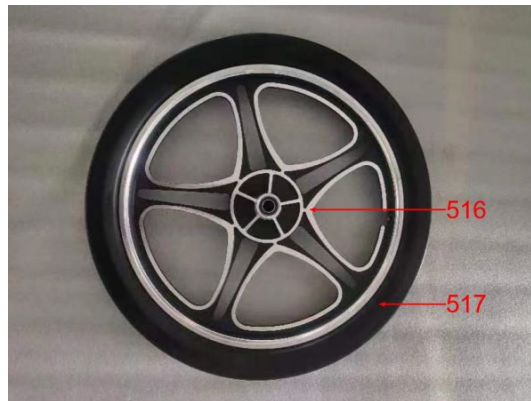
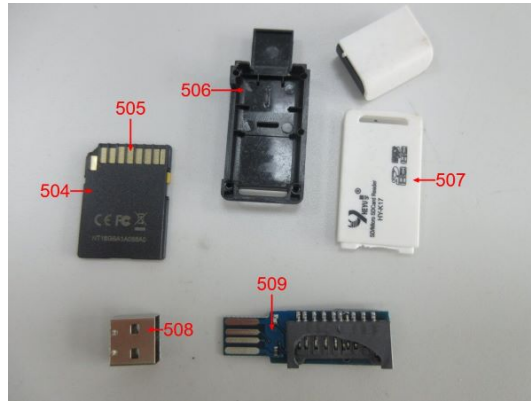
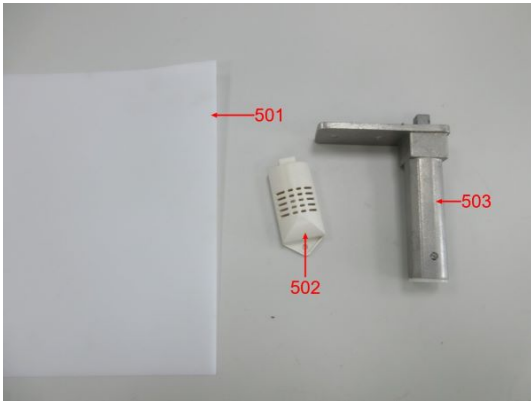


Sample Photos

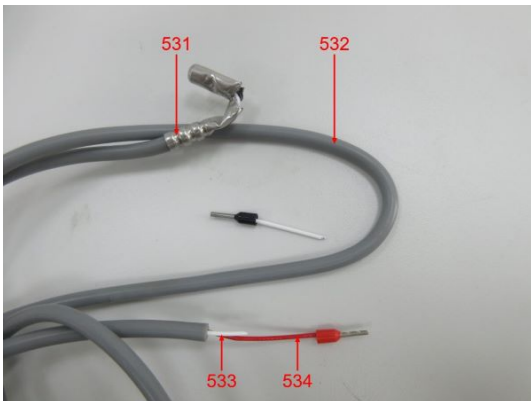


Test Report No.: 178167624a 001 Page 73 of 77

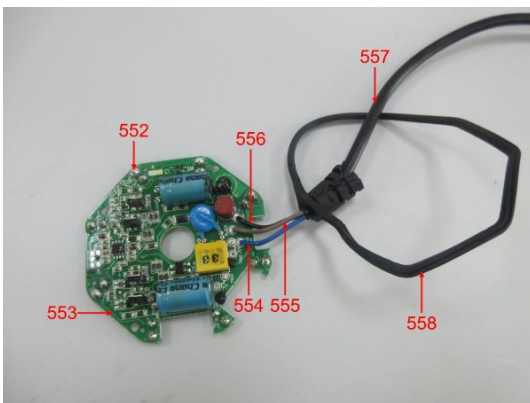
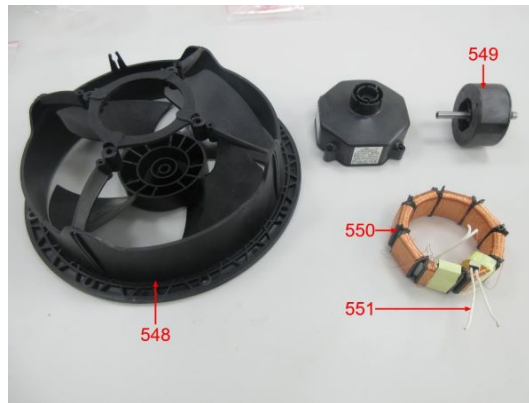
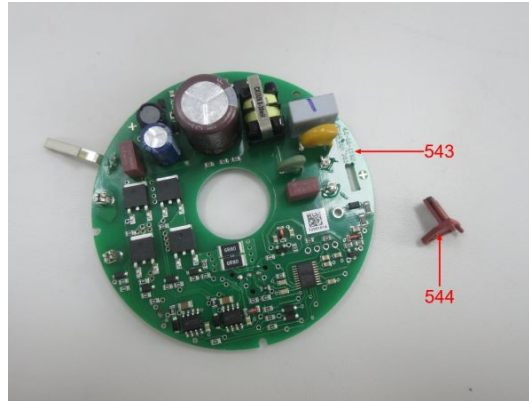
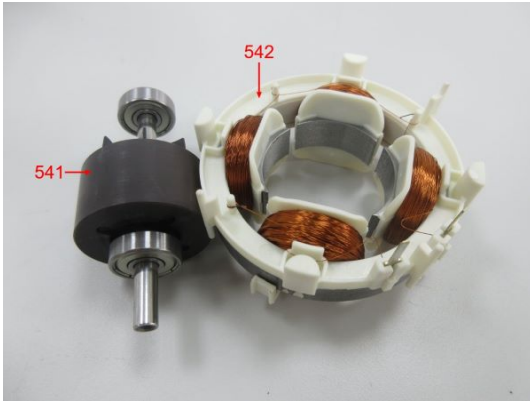
Sample Photos



Sample Photos

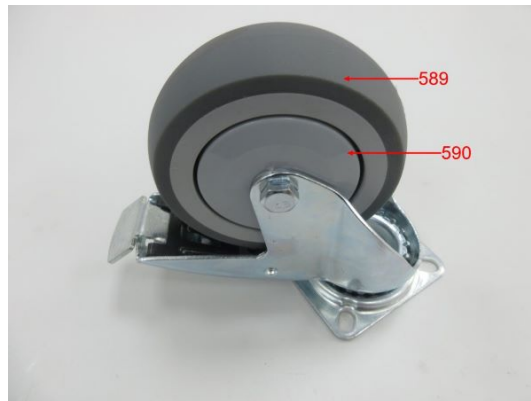
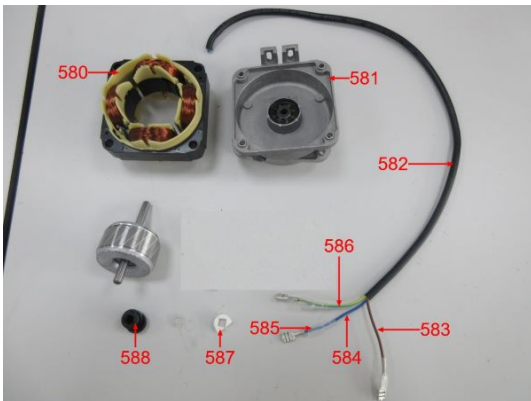
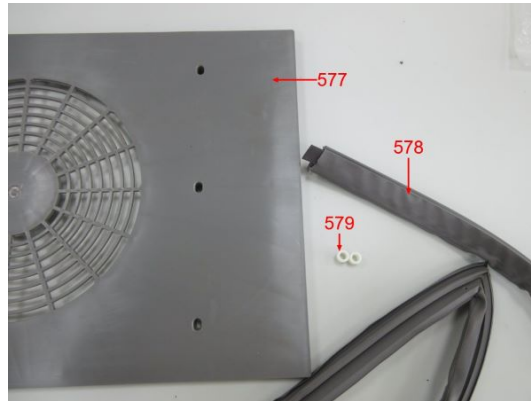
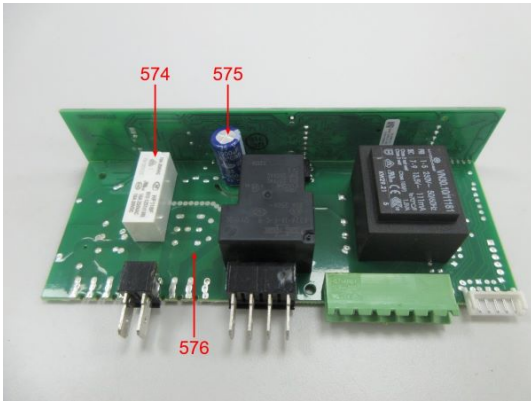


Sample Photos

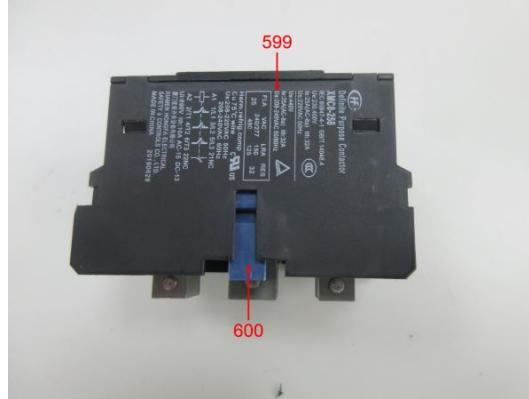


Test Report No.: 178167624a 001 Page 76 of 77

Sample Photos



Sample Photos



- END -

General Terms and Conditions of Business of TÜV Rheinland in Greater China

| | | | | | |
|------|--|------|---|-------|--|
| 1. | Scope | 9.1 | Any part of the work result ordered which is complete in itself may be presented by TÜV Rheinland for acceptance as an instalment. The client shall be obliged to accept it immediately. | 15. | Retention of test material and documentation |
| 1.1 | The General Terms and Conditions of Business of TÜV Rheinland in Greater China ("GTBC") is made between the client and one or more member entities of TÜV Rheinland in Greater China as applicable as the case may be (TÜV Rheinland). The Greater China hereof refers to Mainland China, Hong Kong and Taiwan. The client hereby confirms: (i) a natural person capable to form legally binding contracts under the applicable laws who concludes the contract for the purpose of the GTBC; (ii) a legal entity duly organized, validly existing and capable to form legally binding contracts under the applicable law. | 9.2 | If acceptance is required or contractually agreed in an individual case, this shall be deemed to have taken place two (2) weeks after completion and handover of the work, unless the client refuses acceptance within this period stating at least one fundamental breach of contract by TÜV Rheinland. | 15.1 | The test samples submitted by the client to TÜV Rheinland for testing will be scrapped following testing or will be returned to the client at the client's expense. The only exceptions are test samples, which are placed in storage on the basis of statutory regulations or of another agreement with the client. |
| 1.2 | The following terms and conditions apply to agreed services including consultancy services, information, deliveries and similar services as well as ancillary services and other secondary obligations provided within the scope of contract performance. | 9.3 | The client is not entitled to refuse acceptance due to insignificant breach of contract by TÜV Rheinland. | 15.2 | Charges apply if the test samples are stored at the premises of TÜV Rheinland. The cost of placing a test sample into storage will be disclosed to the client in the quotation. |
| 1.3 | Any standard terms and conditions of the client of any nature shall not apply and shall hereby be expressly excluded. No standard contractual terms and conditions of the client shall form part of the contract even if TÜV Rheinland does not explicitly object to them. | 9.4 | If acceptance is excluded according to the nature of the work performance of TÜV Rheinland, the completion of the work shall take its place. | 15.3 | If reference samples or documentations are given to the client to be placed in storage at their premises or reference samples or documentations must be made available to TÜV Rheinland upon request promptly and free of charge. If the client, in response to such a request, is incapable of making available the reference samples and/or documentation, any ability claims for material and pecuniary damages of TÜV Rheinland against the client and the certification that is brought forward by the client against TÜV Rheinland shall be voided. |
| 1.4 | In the context of an ongoing business relationship with the client, this GTBC shall also apply to future contracts with use and application of such are not covered. In particular, responsibility is assumed for the design, selection of materials, construction or intended use of an examined part, product, process or plant, unless this is expressly stated in the order. | 9.5 | During the follow-up step of the client was unable to make use of the time windows provided for within the scope of a certification procedure for auditing/performance by TÜV Rheinland and the certificate is therefore to be withdrawn (e.g. performance of surveillance audits), or if the client transfers the certificate and materials, that are supplied to the agreed date, TÜV Rheinland is entitled to immediately charge a lump-sum compensation of 10% of the order amount as compensation for expenses. The client reserves the right to prove that the TÜV Rheinland has incurred no damage whatsoever or only a considerably lower damage than the above lump sum. | 15.4 | The retention period for the documentation shall be 10 (ten) years after the expiry of the test mark or certificate, unless the applicable legal requirements for EU/EEC certificates of conformity and GS mark certificates. |
| 2. | Quotations | 9.6 | Insofar as the client has undertaken in the contract to accept services, TÜV Rheinland shall also be entitled to charge a lump-sum damages in the amount of 10% of the order amount as compensation for expenses if the services is not called within one year after the order has been placed. The client reserves the right to prove that the TÜV Rheinland has incurred no damage whatsoever or only a considerably lower damage than the above mentioned lump sum. | 15.5 | The costs of the handover and dispatch of the test samples for storage on the client's premises are borne by the client. TÜV Rheinland will be liable for the loss of test samples or reference samples from the laboratories or warehouses of TÜV Rheinland only in case of gross negligence. |
| 3. | Coming into effect and duration of contracts | 10. | Confidentiality | 16. | Termination of the contract |
| 3.1 | The contract shall come into effect for the agreed terms upon the quotation letter of TÜV Rheinland or a separate contractual document being signed by both contracting parties, or upon request by the client being carried out by TÜV Rheinland. If the client instructs TÜV Rheinland not receiving a quotation from TÜV Rheinland (quotation), TÜV Rheinland, in its sole discretion, may accept or refuse the quotation. The client's acceptance (including notice sent via electronic means) or by performing the requested services. | 10.1 | For the purpose of these terms and conditions, "confidential information" means all know-how, trade secrets, documents, images, drawings, expertise, information, data, test results, reports, samples, project documents, pricing and financial information, customer and supplier information, technical and marketing techniques and materials, tangible or intangible, that are supplied or otherwise disclosed by one Party (the "disclosing party") to the other Party (the "receiving party"), in writing or orally, in printed or electronic form. Confidential information is expressly not the client's know-how collected or compiled or otherwise disclosed by TÜV Rheinland (non-personal and not proprietary to the client) within the scope of the provision of services by TÜV Rheinland. TÜV Rheinland is entitled to store, use, further develop and pass on the data collected in connection with the provision of services for the purposes of developing new services, improving services and analysing the provision of services.10.2. The disclosing party shall mark all confidential information disclosed in written form as confidential before passing it onto the receiving party. The same applies to confidential information transmitted by e-mail. If confidential information is disclosed orally, the receiving party shall be appropriately informed in advance and the disclosing party shall confirm in writing the confidentiality nature of the information and the working days of oral disclosure. Where the disclosing party fails to do so within the stipulated period, the receiving party shall not take any confidentiality obligations hereunder towards such information. The client shall avoid using any third party platform and/or external services (including cloud services of TÜV Rheinland) to send any confidential information to TÜV Rheinland. Instead, the client shall send any confidential information to company email of TÜV Rheinland employees through its company email. If the client suffers from any data loss or other damages (including data loss) to be caused by the adoption of any unauthorized confidential information sharing methods mentioned above, TÜV Rheinland shall be waived for any compensation liabilities. | 16.1 | Notwithstanding clause 3.3 of the GTBC, TÜV Rheinland and the client are entitled to terminate the contract in its entirety or, in the case of a service contract, each of the individual or combined parts of the contract individually and independently of the continuation of the remaining services with six (6) months' notice to the end of the contractual agreed term. The notice period shall be shortened to six (6) weeks in case of TÜV Rheinland is prevented from performing the service due to a force majeure event (see clause 17.1 for the definition of force majeure). For good causes, TÜV Rheinland may consider giving a written notice to the client to terminate the contract and may initiate the termination of the contract by the client. a) the client does not immediately notify TÜV Rheinland of changes in the conditions within the contract which are relevant for certification or signs of such changes; b) the client misuses the certificate or certifies or certifies in violation of the contract; c) in the event of several consecutive delays in payment (at least three times); d) a substantial deterioration of the financial circumstances of the client occurs and as a result the payment claims of TÜV Rheinland under the contract are considerably endangered and TÜV Rheinland cannot reasonably be expected to continue the contractual relationship; e) in the event of any serious misrepresentation, be it intentional fraud or grossly negligent behavior of the managers, employees or agents of the client. |
| 3.2 | The contract term starts upon the coming into effect of the contract in accordance with article 3.1 and shall continue for the term agreed in the contract. | 10.2 | The receiving party may not copy, disseminate, publish or otherwise disclose the confidential information received from the disclosing party only to those of its employees who need this information to perform the services required for the contract. The receiving party undertakes to obligate these employees to observe the same level of confidentiality as set forth in this confidentiality agreement. | 16.2 | If TÜV Rheinland, for reasons beyond its control, is temporarily or finally not able or entitled to continue or finalize the performance of the service, e.g. in case of force majeure, government interference, sanctions, loss of accreditation or notification, or other reasons, TÜV Rheinland shall be entitled to a lump-sum claim for damages against the client if the conditions of a claim for damages exist. In this case, the client shall owe 15% of the remuneration to be paid until the end of the fixed contract term as lump-sum compensation. The client reserves the right to prove that there is no damage or a considerably lower damage. TÜV Rheinland reserves the right to prove a considerably higher damage in individual cases. |
| 3.3 | If the contract provides for an extension of the contract term, the contract term will be extended by the term provided for in the contract unless terminated in writing by either party with a three-month notice prior to the end of the contractual term. | 10.3 | a) may only be used by the receiving party for the purposes of performing the contract, unless expressly otherwise agreed in writing; b) may not be copied, distributed, published or otherwise disclosed by the receiving party, unless this is necessary for fulfilling the purpose of the contract or TÜV Rheinland is required to pass on confidential information to a third party or other external services (including cloud services of TÜV Rheinland) to send any confidential information to TÜV Rheinland. Instead, the client shall send any confidential information to company email of TÜV Rheinland employees through its company email. If the client suffers from any data loss or other damages (including data loss) to be caused by the adoption of any unauthorized confidential information sharing methods mentioned above, TÜV Rheinland shall be waived for any compensation liabilities. | 16.3 | The client is also entitled to terminate the contract with written notice if the client has not been able to make use of the time windows for auditing / service provision provided by TÜV Rheinland within the scope of a certification procedure and the certificate therefore has to be withdrawn (for example during the performance of monitoring audits). Clause 16.3 applies accordingly. |
| 4. | Scope of services | 10.4 | c) shall be treated by the receiving party with the same level of confidentiality as the receiving party uses to protect its own confidential information, but never with a lesser level of confidentiality than that which is reasonably required. | 16.4 | The Party successfully invoking this Clause is relieved from its duty to perform its obligations under the contract and from any liability and damages from any other contractual remedy for breach of contract, from the time at which the impediment causes inability to perform, provided that the notice thereof is given without delay. If notice thereof is not given without delay, the relief is effective from the time at which notice thereof reaches the other party. Where the effect of the impediment or event invoked is temporary, the above consequences shall apply only as long as the impediment impedes performance by the affected Party. Where the duration of the impediment invokes the application of the above consequences, the contracting Parties of which they were reasonably entitled to expect under the contract, either Party has the right to terminate the contract with notification within a reasonable period to the other Party. Unless otherwise agreed, the Parties expressly agree that the contract may be terminated by either Party if the duration of the impediment exceeds 120 days. |
| 4.1 | The scope and type of the services to be provided by TÜV Rheinland shall be specified in the contractually agreed service scope of TÜV Rheinland by both parties. If no such separate service scope of TÜV Rheinland exists, then the written confirmation of order by TÜV Rheinland shall be decisive for the services to be provided. Unless otherwise stated, services beyond the scope of the service description (e.g. checking the correctness and functionality of parts, products, processes, installations, organizations not listed in the service description, as well as the intended use and application of such are not covered. In particular, responsibility is assumed for the design, selection of materials, construction or intended use of an examined part, product, process or plant, unless this is expressly stated in the order. | 10.5 | d) the receiving party developed it itself, irrespective of disclosure by the disclosing party, shall not be deemed to constitute "confidential information" as defined in this confidentiality clause. All confidential information shall remain the property of the disclosing party. The receiving party hereby agrees to immediately (i) return all confidential information, including all copies, to the disclosing party, and/or (ii) on request by the disclosing party, to destroy all confidential information, including all copies, and/or (iii) to provide written confirmation of the destruction of the disclosing party in writing, at any time if so requested by the disclosing party but at the latest and without special request after termination or expiry of the contract. This does not extend to include reports and certificates prepared for the client solely for the purposes of fulfilling the obligation under the contract, which shall remain with the client. TÜV Rheinland is entitled to make file copies of such reports, certificates and confidential information that forms the basis for preparing these reports and certificates in order to evidence the correctness and completeness of the data and documents supplied to the client, regulations and the requirements of working procedures of TÜV Rheinland. | 16.5 | Force Majeure means the occurrence of an event or circumstance that prevents or impedes a Party from performing one or more of its contractual obligations under the contract, if and to the extent that the Party is unable to prevent or avoid such event or circumstance and (b) that it could not reasonably have been foreseen at the time of the conclusion of the contract; and (c) that the effects of the impediment could not reasonably have been avoided or overcome by the Party. |
| 4.2 | The agreed services shall be performed in compliance with the regulations in force at the time the contract is entered into. | 10.6 | a) the receiving party shall maintain the confidentiality of the confidential information and shall not disclose this information to a third party or use it for itself. | 16.6 | In the absence of proof to the contrary, the following events affecting a Party shall be presumed to fulfil conditions (a) and (b) under paragraph 1 of this Clause: (i) war (whether declared or not), hostilities, invasion, civil or armed conflict, terrorism, sabotage or piracy, (ii) civil war, rebellion and revolution, military or usurped power, insurrection, act of terrorism, sabotage or piracy, (iii) currency and trade restriction, embargo, sanction, (iv) act of authority whether lawful or unlawful, (v) compliance with any law or governmental order, requisition, seizure of works, requisition, nationalization, (vi) plague, epidemic, natural disaster or extreme natural event, (vii) explosion, fire, destruction of equipment, prolonged break-down of transport, telecommunication, information system, emergency power, (viii) general labor disturbance such as boycott, strike and lock-out, go-slow, occupation of factories and premises. |
| 4.3 | TÜV Rheinland is entitled to determine, in its sole discretion, the method and nature of the assessment, unless otherwise agreed in writing of mandatory provisions require a specific procedure to be followed. | 10.7 | b) the receiving party shall maintain the confidentiality of the confidential information and shall not disclose this information to a third party or use it for itself. | 16.7 | The Party successfully invoking this Clause is relieved from its duty to perform its obligations under the contract and from any liability and damages from any other contractual remedy for breach of contract, from the time at which the impediment causes inability to perform, provided that the notice thereof is given without delay. If notice thereof is not given without delay, the relief is effective from the time at which notice thereof reaches the other party. Where the effect of the impediment or event invoked is temporary, the above consequences shall apply only as long as the impediment impedes performance by the affected Party. Where the duration of the impediment invokes the application of the above consequences, the contracting Parties of which they were reasonably entitled to expect under the contract, either Party has the right to terminate the contract with notification within a reasonable period to the other Party. Unless otherwise agreed, the Parties expressly agree that the contract may be terminated by either Party if the duration of the impediment exceeds 120 days. |
| 4.4 | On execution of the work there shall be no simultaneous assumption of any guarantee of the correctness (proper quality) and working order of either tested or examined parts nor of the installation as a whole and its upstream and/or downstream processes, organizations, use and application in accordance with regulations, nor of the systems on which the installation is based. In particular, TÜV Rheinland shall not be responsible for the correctness of the selection of materials and assembly of installations examined, nor for their use and application in accordance with regulations, unless these questions are expressly covered by the contract. | 11. | Copyrights and rights of use, publications | 16.8 | Hardship |
| 4.5 | In the case of inspection work, TÜV Rheinland shall not be responsible for the accuracy or checking of the safety programmes or safety regulations on which the inspections are based, unless otherwise expressly agreed in writing. | 11.1 | TÜV Rheinland shall retain all exclusive copyrights in the reports, expert reports/opinions, test reports/results, calculations, presentations etc. prepared by TÜV Rheinland, unless otherwise agreed by the parties in a separate agreement. As the owner of the copyrights, TÜV Rheinland is free to grant others the right to use the work results for individual or all types of use (right of use). | 16.9 | The Parties are bound to perform their contractual duties even if events have rendered performance more onerous than could reasonably have been anticipated at the time of the conclusion of the contract. |
| 4.6 | If mandatory legal regulations and standards or official requirements for the agreed service scope change after conclusion of the contract, with a written notice to the client, TÜV Rheinland shall be entitled to additional remuneration for resulting additional expenses. | 11.2 | The client receives a simple, unlimited, non-transferable, non-sublicensable right of use to the contents of the work results produced under the scope of the contract, unless otherwise agreed by the parties in a separate agreement. The client may only use such reports, expert reports/opinions, test reports/results, results, calculations, presentations etc. prepared within the scope of the contract for the purposes of the contract. The client may not pass on the work results in full unless TÜV Rheinland has given its prior written consent to the partial passing on of work results. | 16.10 | Notwithstanding paragraph 1 of this Clause, where a Party proves that: (a) the continued performance of its contractual duties has become excessively onerous due to an event beyond its reasonable control which could not reasonably have been expected to have taken into account at the time of the conclusion of the contract; and that it could not reasonably have avoided or overcome the event or its consequences, the Parties are bound, within a reasonable time of the invocation of this Clause, to negotiate alternative contractual terms which reasonably allow to overcome the consequences of the event. |
| 4.7 | The services to be provided by TÜV Rheinland under the contract are agreed exclusively with the client. A contract of third parties with the services of TÜV Rheinland, as well as making available of and justifying confidence in the work results (test reports, test results, expert reports, etc.) is not part of the agreed services. This also applies if the client passes on work results - in full or in extracts - to third parties in accordance with clause 11.4. | 11.3 | Any publication or duplication of the work results for advertising purposes or any further use of the work results beyond the scope regulated in clause 11.2, and any quotation of the introduction of TÜV Rheinland need the prior written approval of TÜV Rheinland in each individual case. Besides, the client ensures that the aforesaid use shall comply with applicable laws, regulations and relevant rules (including but not limited to specific applicable testing and certification rules, etc.). | 16.11 | Where Clause 16.2 applies, but where the Parties have been unable to agree alternative contractual terms as provided in that paragraph, the Party invoking this Clause is entitled to terminate the contract, but cannot request adaptation by the judge or arbitrator without the agreement of the other Party. |
| 5. | Performance periods/dates | 11.4 | The client may use work results only complete and unshortened. The client may only pass on the work results in full unless TÜV Rheinland has given its prior written consent to the partial passing on of work results. | 16.12 | Partial invalidity, written form, place of jurisdiction and dispute resolution |
| 5.1 | The contractually agreed periods/dates of performance are based on estimates of the work involved which are prepared in line with the details provided by the client. They shall only be binding if confirmed in writing by the client. The client shall be liable for any delay in the performance of the service as specified in the contract. | 11.5 | Any publication or duplication of the work results for advertising purposes or any further use of the work results beyond the scope regulated in clause 11.2, and any quotation of the introduction of TÜV Rheinland need the prior written approval of TÜV Rheinland in each individual case. Besides, the client ensures that the aforesaid use shall comply with applicable laws, regulations and relevant rules (including but not limited to specific applicable testing and certification rules, etc.). | 16.13 | All amendments and supplements must be in writing in order to be effective. This also applies to amendments and supplements to this clause 17.1. |
| 5.2 | Articles 5.1 to 5.2 also apply, unless otherwise agreed by the client, to all extensions of agreed periods/dates of performance not caused by TÜV Rheinland. | 11.6 | In cases involving a fundamental breach of contract, TÜV Rheinland will be liable even where minor negligence is involved. For this purpose, a "fundamental breach" is a breach of a material contractual obligation, the performance of which permits the due performance of the contract. Any claim for damages for a fundamental breach of contract shall be limited to the amount of damages reasonably foreseeable as a possible consequence of such breach of contract at the time of the breach (reasonably foreseeable damages), unless any of the circumstances described in article 12.2 apply. | 16.14 | Should one or several of the provisions under the contract and/or these terms and conditions be or become ineffective, the contracting parties shall replace the invalid provision with a legally valid provision that comes closest to the content of the invalid provision in legal and commercial terms. |
| 5.3 | TÜV Rheinland is not responsible for a delay in performance, in particular if the client has not fulfilled his obligation to cooperate in accordance with clause 6.1 or has not done so in time and, in particular, has not provided TÜV Rheinland with all documents and information required for the performance of the service as specified in the contract. | 11.7 | The limitation of liability periods for damages shall be based on statutory provisions. None of the provisions of this article 12 changes the burden of proof to the disadvantage of the client. | 16.15 | Unless otherwise stipulated in the contract, the governing law of the contract and these terms and conditions shall be chosen following the rules as below: if TÜV Rheinland in question is legally registered and existing in the People's Republic of China, the contracting parties hereby agree that the contract and these terms and conditions shall be governed by the laws of the People's Republic of China. |
| 5.4 | TÜV Rheinland is not responsible for a delay in performance, in particular if the client has not fulfilled his obligation to cooperate in accordance with clause 6.1 or has not done so in time and, in particular, has not provided TÜV Rheinland with all documents and information required for the performance of the service as specified in the contract. | 12. | Liability of TÜV Rheinland | 16.16 | If TÜV Rheinland in question is legally registered and existing in Taiwan, the contracting parties hereby agree that the contract and these terms and conditions shall be governed by the laws of Taiwan. |
| 5.5 | If the performance of TÜV Rheinland is delayed due to unforeseeable circumstances such as force majeure, strikes, business interruptions, governmental regulations, transport obstacles, etc., TÜV Rheinland is entitled to postpone performance for a reasonable period of time which corresponds at least to the duration of the hindrance plus any time period which may be required to perform the services. | 12.1 | Respective of the legal basis, to the fullest extent permitted by applicable law, in the event of a breach of contractual obligations or tort, the liability of TÜV Rheinland for all damages, losses and reimbursement of expenses caused by TÜV Rheinland, its legal representatives and/or employees shall be limited to: (i) in the case of a contract with fixed overall fees, three times the overall fee for the entire contract; (ii) in the case of a contract for an annually recurring services, the agreed annual fee; (iii) in the case of a contract expressly charged on a time and material basis, a maximum of 20,000 Euro or equivalent amount in local currency; and (iv) in the case of a framework agreement that provides for the possibility of placing individual orders, three times the fee for the individual order under which the damages or losses have occurred. Notwithstanding the above, in the event that the total and accumulated liability calculated according to the foregoing provisions exceeds 2.5 Million Euro or equivalent amount in local currency, the total and accumulated liability of TÜV Rheinland shall be only limited to and shall not exceed the said 2.5 Million Euro or equivalent amount in local currency. The limitation of liability, intent or gross negligence on the part of TÜV Rheinland or its vicarious agents. Such limitation shall not apply to damages for a person's death, physical injury or illness. | 16.17 | If TÜV Rheinland in question is legally registered and existing in Hong Kong, the contracting parties hereby agree that the contract and these terms and conditions shall be governed by the laws of Hong Kong. |
| 5.6 | If the client is obliged to comply with legal, official prescribed and/or by the accreditor prescribed deadlines, it is the client's responsibility to agree on performance dates with TÜV Rheinland which enable the client to comply with the legal and/or officially prescribed deadlines. TÜV Rheinland assumes no responsibility in this respect unless TÜV Rheinland expressly agreed in writing specifically stating that ensuring the deadlines is the contractual obligation of TÜV Rheinland. | 12.2 | In cases involving a fundamental breach of contract, TÜV Rheinland will be liable even where minor negligence is involved. For this purpose, a "fundamental breach" is a breach of a material contractual obligation, the performance of which permits the due performance of the contract. Any claim for damages for a fundamental breach of contract shall be limited to the amount of damages reasonably foreseeable as a possible consequence of such breach of contract at the time of the breach (reasonably foreseeable damages), unless any of the circumstances described in article 12.2 apply. | 16.18 | If TÜV Rheinland in question is legally registered and existing in the People's Republic of China, the contracting parties hereby agree that the contract and these terms and conditions shall be governed by the laws of the People's Republic of China. |
| 6. | The client's obligation to cooperate | 12.3 | TÜV Rheinland shall not be liable for the acts of the personnel made available by the client to support TÜV Rheinland in the performance of its services under the contract, unless such personnel made available is regarded as vicarious agent of TÜV Rheinland. If TÜV Rheinland is not liable for the acts of the personnel made available by the client under the foregoing provision, the client shall indemnify TÜV Rheinland against any claims made by third parties arising from or in connection with such personnel's acts. | 16.19 | Unless otherwise stipulated in the contract, the governing law of the contract and these terms and conditions shall be chosen following the rules as below: if TÜV Rheinland in question is legally registered and existing in the People's Republic of China, the contracting parties hereby agree that the contract and these terms and conditions shall be governed by the laws of the People's Republic of China. |
| 6.1 | The client shall guarantee that all cooperation required on its part, its agents or third parties will be provided in a timely manner by TÜV Rheinland. | 12.4 | The limitation periods for claims for damages shall be based on statutory provisions. None of the provisions of this article 12 changes the burden of proof to the disadvantage of the client. | 16.20 | In the case of TÜV Rheinland in question being legally registered and existing in the People's Republic of China, to China International Economic and Trade Arbitration Commission (CIETAC) to be settled in Beijing. If the arbitration under the CIETAC in force where the arbitration is submitted, the arbitration shall take place in Beijing, Shanghai, Shenzhen or Chongqing as appropriately chosen by the claiming party. |
| 6.2 | Design documents, supplies, auxiliary staff, etc. necessary for performance of the services shall be made available free of charge by the client. Moreover, collaborative action of the client must be undertaken in accordance with legal provisions, standards, safety regulations and accident prevention instructions. And the client represents and warrants that: | 12.5 | Unless otherwise contractually agreed in writing, TÜV Rheinland shall only be liable under the contract to the client. | 16.21 | In the case of TÜV Rheinland in question being legally registered and existing in Taiwan, to Chinese Arbitration Association, Taipei to be arbitrated in accordance with its then current Rules of Arbitration. The arbitration shall take place in Taipei. |
| 6.3 | a) It has required statutory qualifications; | 12.6 | Unless otherwise contractually agreed in writing, TÜV Rheinland shall only be liable under the contract to the client. | 16.22 | In the case of TÜV Rheinland in question being legally registered and existing in Hong Kong, to Hong Kong International Arbitration Centre (HKIAC) to be settled by arbitration under the HKIAC Administered Arbitration Rules in force when the Notice of Arbitration is submitted in accordance with these terms and conditions. The arbitration shall take place in Hong Kong. The decision of the relevant arbitration tribunal shall be final and binding on both parties. The arbitration fee shall be borne by the losing party. |
| 6.4 | b) The product, service or management system to be certified complies with applicable laws and regulations; and | 12.7 | Unless otherwise contractually agreed in writing, TÜV Rheinland shall only be liable under the contract to the client. | | |
| 6.5 | c) It doesn't have any illegal and dishonest behaviours or is not included in the list of Enterprises with Serious Illegal Disruptive Behaviors of People's Republic of China. | | | | |
| 6.6 | If the client breaches the aforesaid representations and warranties, TÜV Rheinland is entitled to (i) immediately terminate the contractor/under prior notice and (ii) withdraw the issued testing report/certificates if any. | | | | |
| 6.7 | The client shall bear any additional cost incurred on account of work having to be redone or being delayed as a result of late, incorrect or incomplete information provided by or lack of proper cooperation from the client. Even when the contract price is agreed, TÜV Rheinland shall be entitled to charge extra fees for such additional expense. | | | | |
| 7. | Prices | | | | |
| 7.1 | If the scope of performance is not laid down in writing when the order is placed, invoicing shall be based on costs actually incurred. If no price is agreed in writing, the contract shall be concluded in accordance with the price list of TÜV Rheinland valid at the time of performance. | | | | |
| 7.2 | Unless otherwise agreed, work shall be invoiced according to the progress of the work. | | | | |
| 7.3 | If the execution of an order extends over more than one month and the value of the contract or the agreed fixed price exceeds €2,500.00 or equivalent value in local currency, TÜV Rheinland may demand payments on account or in instalments. | | | | |
| 8. | Payment terms | | | | |
| 8.1 | All invoice amounts shall be due for payment within 30 days of the invoice date without deduction on receipt of the invoice. No discounts and rebates shall be granted. | | | | |
| 8.2 | Payments shall be made to the order account of TÜV Rheinland as indicated on the invoice, stating the invoice and client numbers. | | | | |
| 8.3 | In cases of default of payment, TÜV Rheinland shall be entitled to claim default interest at the applicable short term loan interest rate publicly announced by a reputable commercial bank in the country where TÜV Rheinland is located. At the same time, TÜV Rheinland reserves the right to claim further damages. | | | | |
| 8.4 | Should the client default on payment of the invoice despite being granted a reasonable grace period, TÜV Rheinland shall be entitled to cancel the contract, withdraw the certificate, claim damages for non-performance and refuse to continue performance of the contract. | | | | |
| 8.5 | The provisions set forth in article 8.4 shall also apply in cases involving returned checks, cessation of payment, commencement of insolvency proceedings against the client's assets or cases in which the commencement of insolvency proceedings has been dismissed due to lack of assets. | | | | |
| 8.6 | Objections to the invoices of TÜV Rheinland shall be submitted in writing within two weeks of receipt of the invoice. | | | | |
| 8.7 | TÜV Rheinland shall be entitled to demand appropriate advance payments. | | | | |
| 8.8 | TÜV Rheinland shall be entitled to raise its fees at the beginning of a month if overheads and/or purchase costs have increased. In this case, TÜV Rheinland shall notify the client in writing of the rise in fees. This notification shall be issued one month prior to the date on which the fees in fact come into effect (period of notice of changes in fees). If the rise in fees remains under 5% per contractual year, the client shall not have the right to terminate the contract. If the rise in fees exceeds 5% per contractual year, the client shall be entitled to terminate the contract by the end of the period of notice of changes in fees. If the contract is not terminated, the changed fees shall be deemed to have been agreed upon by the time of the expiry of the notice period. | | | | |
| 8.9 | Only legally established and undisputed claims may be offset against claims by TÜV Rheinland. | | | | |
| 8.10 | TÜV Rheinland shall have the right at all times to set off any amount due or payable by the client, including but not limited to set off against any fees paid by the client under any contracts, agreement and/or orders/quotations reached with TÜV Rheinland. | | | | |
| 9. | Acceptance of work | | | | |
| | | 14. | Data protection notice | | |